



# Roxtec SPM™ seal

Seal your metal pipes without welding

Roxtec proudly introduces the innovative Roxtec SPM seal – a patented sealing solution that ensures safety and operational reliability without any downtime or cost related to welding. It is a light-weight solution that can be used to seal any kind of metal pipe against fire, water and gas onboard marine or offshore structures.

## Flexible to pipe and structure

The seal is made of highly elastic EPDM rubber and fittings of acid-proof stainless steel. It is quick and easy to install from only one side of steel and aluminum decks or bulkheads. The structure may range in thickness from 6 to 15 mm.

The Roxtec SPM seal maintains a tight seal around the metal pipe as well as sealing inside any uneven or irregular opening. The indicators that show when full compression is achieved are just one example of its safe and user-friendly design.

## Benefits

- Quick and easy to install
- Flexible
- Reliable
- Cost-efficient
- Certified protection

# Ensure safety onboard

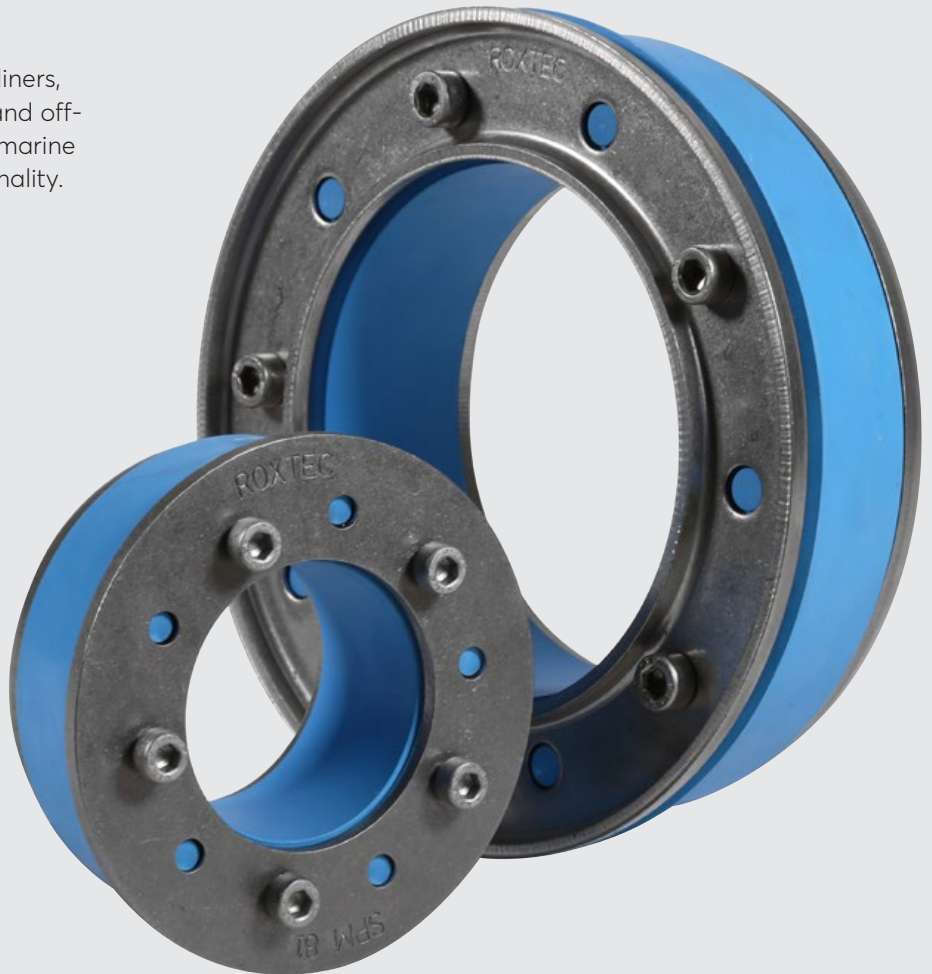
The Roxtec SPM seal is ideal for ensuring protection against fire, gas and water in metal pipe installations where welding is not allowed, recommended or desired.

You can install it onboard your cruise liners, passenger ships, commercial vessels and off-shore platforms and inside any other marine structure to ensure safety and functionality.

## Certified protection\*

- Fire rated (A-60)
- Watertight (1 bar)
- Gas-tight (0.67 bar)

\* For approved insulation requirements, please refer to applicable class documentation.



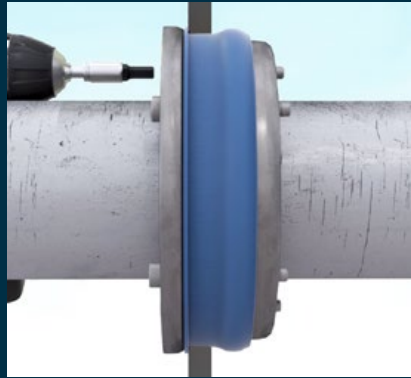
Installation	Innovation	Design	Productivity
<b>Quick and easy</b> <ul style="list-style-type: none"><li>● One piece</li><li>● Single-side installation</li><li>● Non-weld solution</li></ul>	<b>Flexible</b> <ul style="list-style-type: none"><li>● Patented technology</li><li>● Tolerance for pipe sizes and uneven openings</li><li>● Space saving flexibility</li></ul>	<b>Reliable</b> <ul style="list-style-type: none"><li>● Highly elastic rubber</li><li>● Acid-proof stainless steel</li><li>● Full compression indicators</li></ul>	<b>Cost-efficient</b> <ul style="list-style-type: none"><li>● Light-weight</li><li>● No welding downtime</li><li>● No welding equals no additional painting costs</li></ul>

## How it works

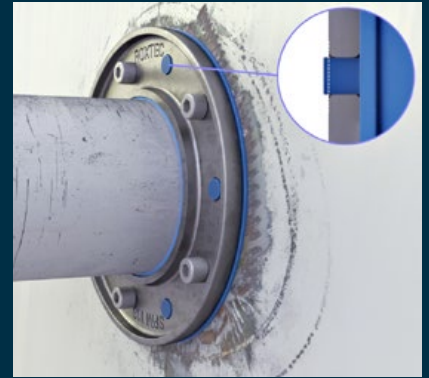
The example shows the features that make it a quick and easy process to install the Roxtec SPM seal.



Slide the pipe through the Roxtec SPM seal and insert it into the opening. The seal copes with wide tolerances towards both pipe and opening.



Fit the seal against the inside of the opening and tighten the bolts. It maintains a tight seal around the pipe and inside the opening.



The indicators show when full compression is achieved in order to simplify both installation and inspection.

# Learn more about the Roxtec SPM™ seal



Visit the Roxtec website to find practical step-by-step installation instructions and watch videos describing the innovative features of the seal in detail.

You can also access useful information such as drawings and read more about the user-friendly product on [roxtec.com/spm](https://roxtec.com/spm).

# Roxtec SPM™ seal

Seal	For pipe outside diameter		For hole diameter		Weight		Art. no
	Ø (mm)	Ø (in)	Ø (mm)	Ø (in)	(kg)	(lb)	
SPM 39	8 – 12	0.315 – 0.472	39 – 43	1.535 – 1.693	0.1	0.220	167591
SPM 41	12 – 16	0.472 – 0.630	41 – 45	1.614 – 1.772	0.1	0.263	153052
SPM 48	16 – 20	0.630 – 0.787	48 – 52	1.890 – 2.047	0.2	0.441	167592
SPM 54	19 – 23	0.748 – 0.906	53.5 – 57.5	2.106 – 2.264	0.2	0.441	153060
SPM 59	24 – 28	0.945 – 1.102	58.5 – 62.5	2.303 – 2.461	0.3	0.551	153064
SPM 62	27 – 31	1.063 – 1.220	61.5 – 65.5	2.421 – 2.579	0.3	0.573	153068
SPM 69	32 – 36	1.260 – 1.417	68.5 – 72.5	2.697 – 2.854	0.3	0.683	153072
SPM 77	37 – 42	1.457 – 1.654	76.5 – 80.5	3.012 – 3.169	0.5	1.102	166011
SPM 81	41.4 – 45.4	1.630 – 1.787	81 – 85	3.189 – 3.346	0.5	1.014	153040
SPM 87	47 – 51	1.850 – 2.008	87 – 91	3.425 – 3.583	0.5	1.102	153076
SPM 92	52 – 56	2.047 – 2.205	92 – 96	3.622 – 3.779	0.5	1.168	153080
SPM 103	56.2 – 61.1	2.213 – 2.406	103 – 107	4.055 – 4.213	0.7	1.433	153084
SPM 119	72.2 – 76.9	2.843 – 3.028	119 – 123	4.685 – 4.843	0.8	1.720	153088
SPM 138	88 – 92	3.465 – 3.622	138 – 142	5.433 – 5.591	1.1	2.315	153056
SPM 149	99 – 103	3.898 – 4.055	149 – 153	5.866 – 6.024	1.2	2.645	167594
SPM 157	107 – 111	4.213 – 4.370	157 – 161	6.181 – 6.339	1.2	2.734	153092
SPM 168	113 – 117	4.449 – 4.606	168 – 172	6.614 – 6.772	1.6	3.461	153096
SPM 178	123 – 127	4.843 – 5.000	178 – 182	7.008 – 7.165	1.7	3.747	167595
SPM 188	131 – 135	5.157 – 5.315	188 – 192	7.402 – 7.559	1.8	3.968	167596
SPM 196	138.5 – 143	5.453 – 5.630	196 – 200	7.717 – 7.874	1.9	4.255	153100
SPM 217	157 – 162	6.181 – 6.378	217 – 221	8.543 – 8.701	2.3	5.070	167597
SPM 226	167 – 171	6.575 – 6.732	226 – 230	8.898 – 9.055	2.4	5.291	153104
SPM 279	218 – 222	8.583 – 8.740	279 – 283	10.984 – 11.142	3.0	6.702	153036



# Roxtec SLA sealing solution

with non-weld adaption sleeves

Roxtec R transits and RS seals with adaption sleeves make it easy for you to add cables late in a project or perform repair works without welding.

## Designed for quick installation

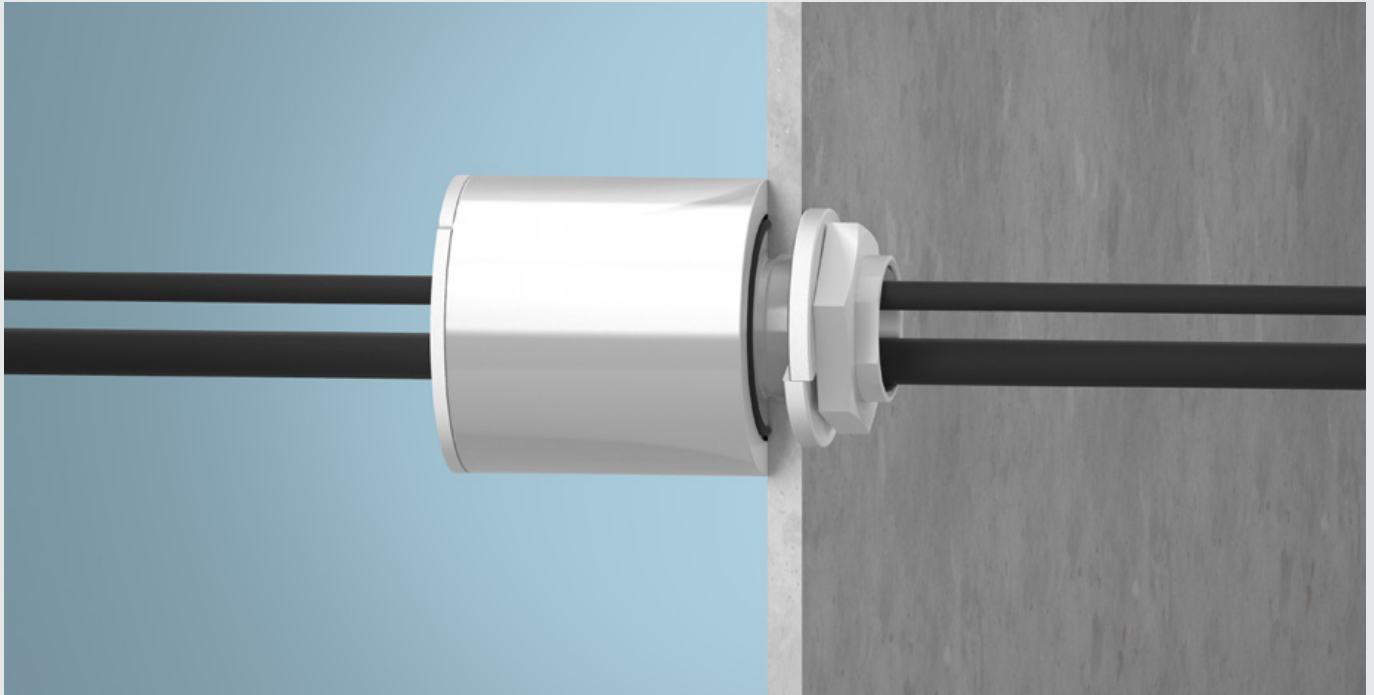
You simply drill a hole in the structure using a hole saw. The sleeve is threaded, attached with a counter nut and designed to fit in standard hole saw openings.

## Easy installation

- Eliminate welding
- Minimize hole cutting
- Reduce fixation work

## Certified protection

- A-Class division fire rating
- 2.5 bar water-tightness



## Select a kit for one or multiple cables

### R transit with SLA

The Roxtec R with SLA adaption sleeve is a round sealing solution for multiple cables in a limited area. The sealing modules adapt to cables of different sizes and can be used to build in spare capacity in the transit.

### RS seal with SLA

The Roxtec RS with SLA adaption sleeve is a sealing solution for a single cable. The sealing part has two halves with removable layers making it adaptable to several cable sizes.



Read more about the  
Roxtec SLA sealing kits on



[roxtec.com/sla](https://roxtec.com/sla)