

TOTAL POWER

4300kW

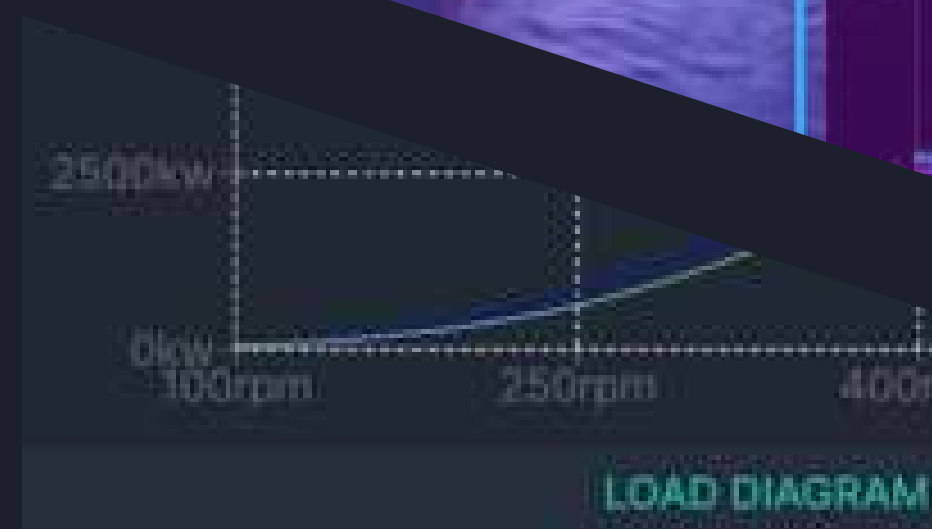
Efficiency
75%

connect

Fleet performance and vessel optimization

Critical Alarms

108



Lubrication Oil
0.03
GT/mile

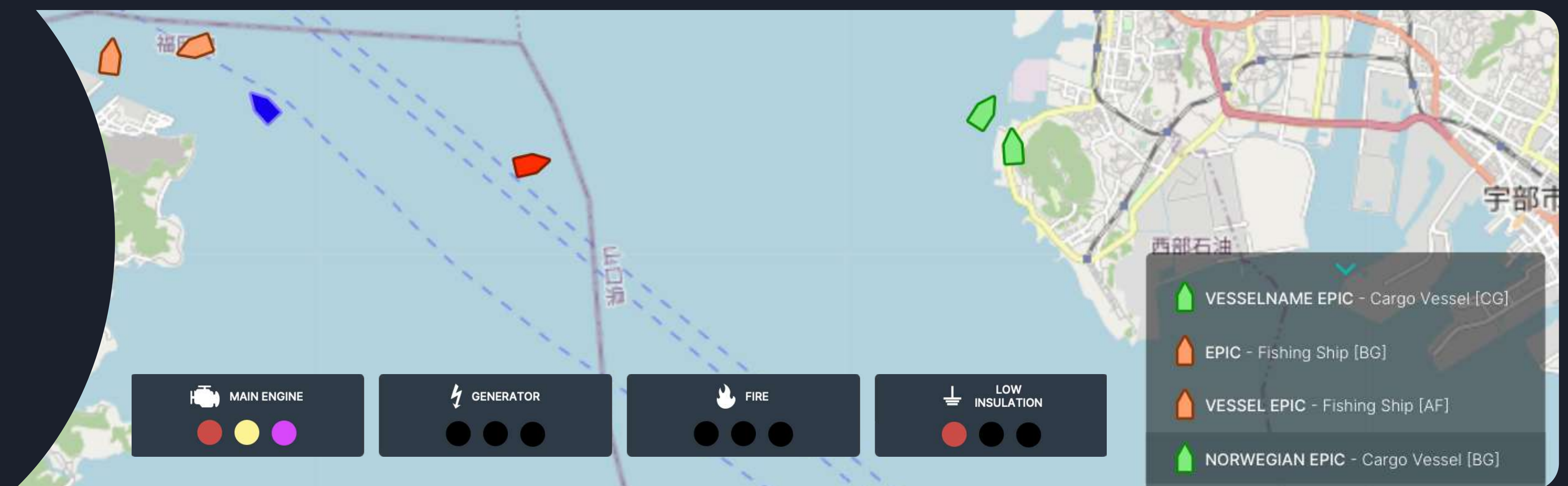
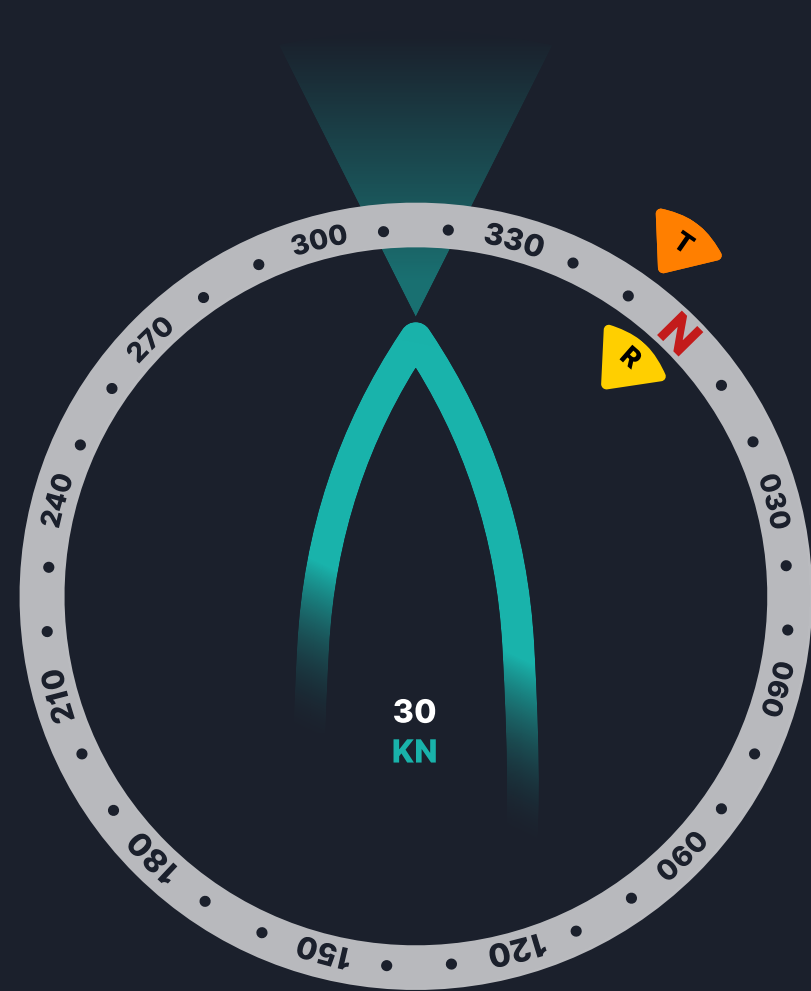


Real-time Monitoring and Data Analysis

Based on the integration of sensor data, **connect** features real-time data monitoring for your whole fleet. Multiple parameters for generator and engine performance are supported. In addition to real-time monitoring, trend graphs for the selected parameters are shown.

Infoceanus API Integration

Infoceanus API allows organizations to access vessel data securely in real time, automate their systems, enhance their business logic, and integrate their current applications. It also provides extensive online documentation for all sensor and infoceanus product data.



Alarm Monitoring and History

Connect features alarm monitoring, directly connected to the AMS on board as well as an alarm history of all connected vessels. Alarms are shown on the **Fleet Overview** enabling quick and efficient intervention.

- Fire alarm
- Engine alarm
- Low Isolation alarm and more!

Contact Us:

JRCS Digital Innovation LAB

📍 : 1-2-14 Higashiyamato-machi, Shimonoseki, Yamaguchi, 750-8515

🌐 : <https://infoceanus.com/en/>

✉ : biz_digital@jrco.co.jp