

Centrifugal Oil Cleaner - CP

- CP200
- CP400
- CP600
- CP1200

Centrifugal Oil Cleaner is working by the action & reaction principle caused by oil pressure in two nozzles. It creates a high-performance oil filtration unit rotating at a speed of 2,000~3,000 RPM.

Characteristics

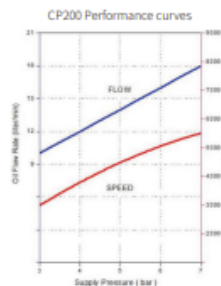
- Promotes purity of oil
- Extended life and service cycle of engine and equipment
- Reduced wear on engines and mechanical equipment
- Reduced maintenance costs and fuel consumption

CP200

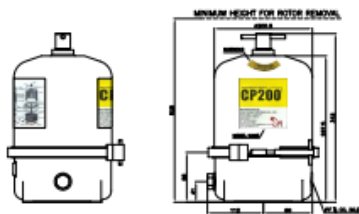


Model	Flow rate		RPM (4.5 bar)	Tank Capacity (L)	Rotor Capacity (L)	Sludge Capacity (L)	Weight (kg)
	(L/min)	(L/hour)					
CP200	16	960	4000	1000-3000	2.4	2.1	8

Performance curve



Exterior drawing

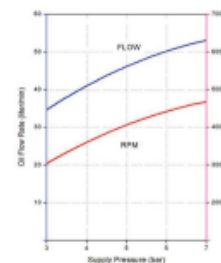


CP400

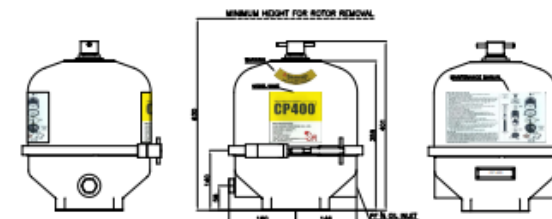


Model	Flow rate		RPM (4.5 bar)	Tank Capacity (L)	Rotor Capacity (L)	Sludge Capacity (L)	Weight (kg)
	(L/min)	(L/hour)					
CP400	45	2700	3800	3000-5000	4.5	4.0	22

Performance curve



Exterior drawing

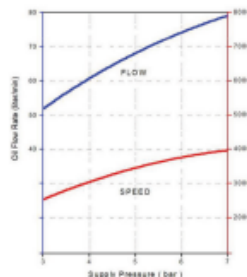


CP600

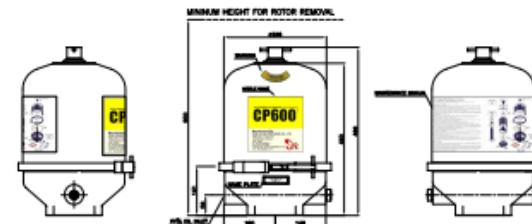


Model	Flow rate		RPM (4.5 bar)	Tank Capacity (L)	Rotor Capacity (L)	Sludge Capacity (L)	Weight (kg)
	(L/min)	(L/hour)					
CP600	65	3900	3600	5000~	6.8	6.3	25

Performance curve



Exterior drawing



CP1200

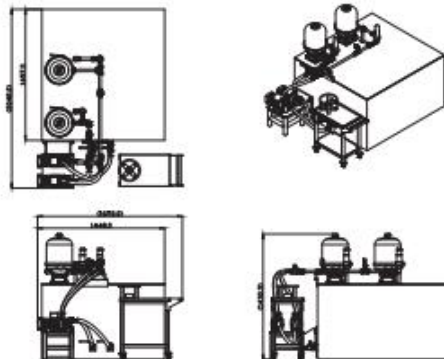
CP1200 is a new customizable system developed according to customer needs. It consists of two centrifugal oil cleaners installed on top of an oil tank.

CP1200 is used to collect large volumes of sludge from the machining center. It improves the quality of processed products and reduces maintenance costs through oil purification

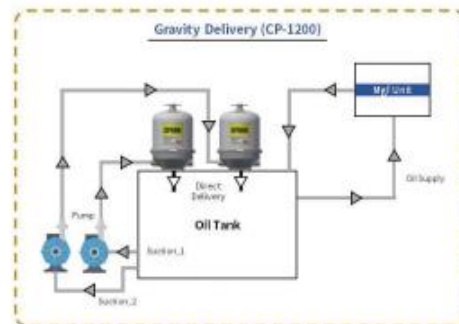


CP 1200	
Power	220 / 380 V x 60 Hz
Inlet Motor	AC MOTOR 2P 1.1 kW
Outlet Motor	-
Inlet Pump	60 L/min x 0.4 MPa
Outlet Pump	-
Suction & Delivery	Φ28 mm
Oil max temp	~130°C
Dimension	1650mm(L) x 2042mm(W) x 1430mm(H)
Flow rate	8,000 L/hr
Max. pressure	6.0 bar
Min. pressure	1.0 bar
Particle size	Paper filter 4~20µm(or bigger)
	Hybrid filter 1~20µm(or bigger)

Exterior drawing



Diagram



Installation photos



Marine Application



Marine Application



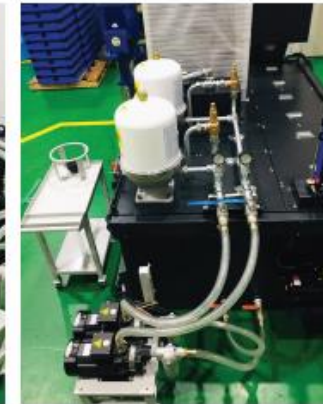
Marine Application



Marine Application



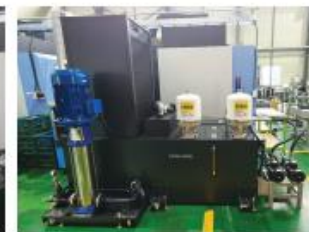
Industrial Application



Industrial Application



Industrial Application



Industrial Application



Industrial Application