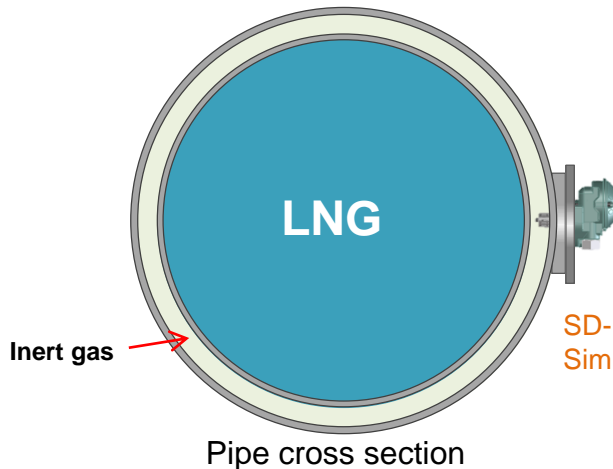


Riken Keiki News Letter

<http://www.rikenkeiki.co.jp/>

For Combustible Gas Detection under Inert Gas Atmosphere Smart Transmitter/Gas detector (for inside furnace) Model: SD-1RI-T



SD-1RI-T
Simple schematic

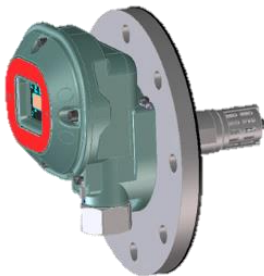
Directly insert & infrared sensor
Can detect combustible
gases under inert
atmosphere in pipes!!



On the LNG tanker ship, a dual-pipe is used for LNG supply, which include inert gas inside. We recommend smart transmitter gas detector SD-1RT-T which can detect the gas inside pipes. SD-1RI-T is equipped with infrared sensor, which makes it able to detect combustible gas without the interference of oxygen. Besides, it has a high sensitivity, that makes it no interference of other mixed and steam.

Smart Transmitter /
Gas detector
(For inside furnace)

Model: **SD-1RI-T**



【Features】 ※ Request catalog for more information

- Fixed type gas detector for inside furnace ⇒ Can detect gas inside pipes directly
- Infrared sensor ⇒ No interference from oxygen concentration

Application

Riken Keiki Co., Ltd. Overseas Business Department
2-7-6 Azusawa Itabashi-Ku, Tokyo 174-8744 Japan
TEL: 81-3-3966-1113 FAX: 81-3-3558-9110
E-MAIL : intdept@rikenkeiki.co.jp