

Orbit Overview

Platform Overview and Brochure

WHO IS ORBITMI?

OrbitMI Inc. is a NYC software-as-a-service company with offices and partners across the world. Our customers use our solutions to operate their fleets more profitably, efficiently, safely, and sustainably by connecting multiple systems into intelligent connected workflows directly via desktop and mobile app. Maritime Carbon Solutions (MCS), an information-as-a-service firm that provides shipowners and cargo owners with precise and real-time information on CO2 emissions, is a joint venture between OrbitMI and Ifchor Galbraiths.

OrbitMI was named a “Leader” by Thetius I.Q. in its Market Landscape Report - Voyage Optimisation Solutions 2023. In September 2023, Bureau Veritas invested in software company OrbitMI as the two companies forged a strategic partnership on performance management in shipping.

Mission: To help its customers become data driven by breaking down information silos, enabling them to optimize fleet performance and decision making through a single, collaborative user-interface.

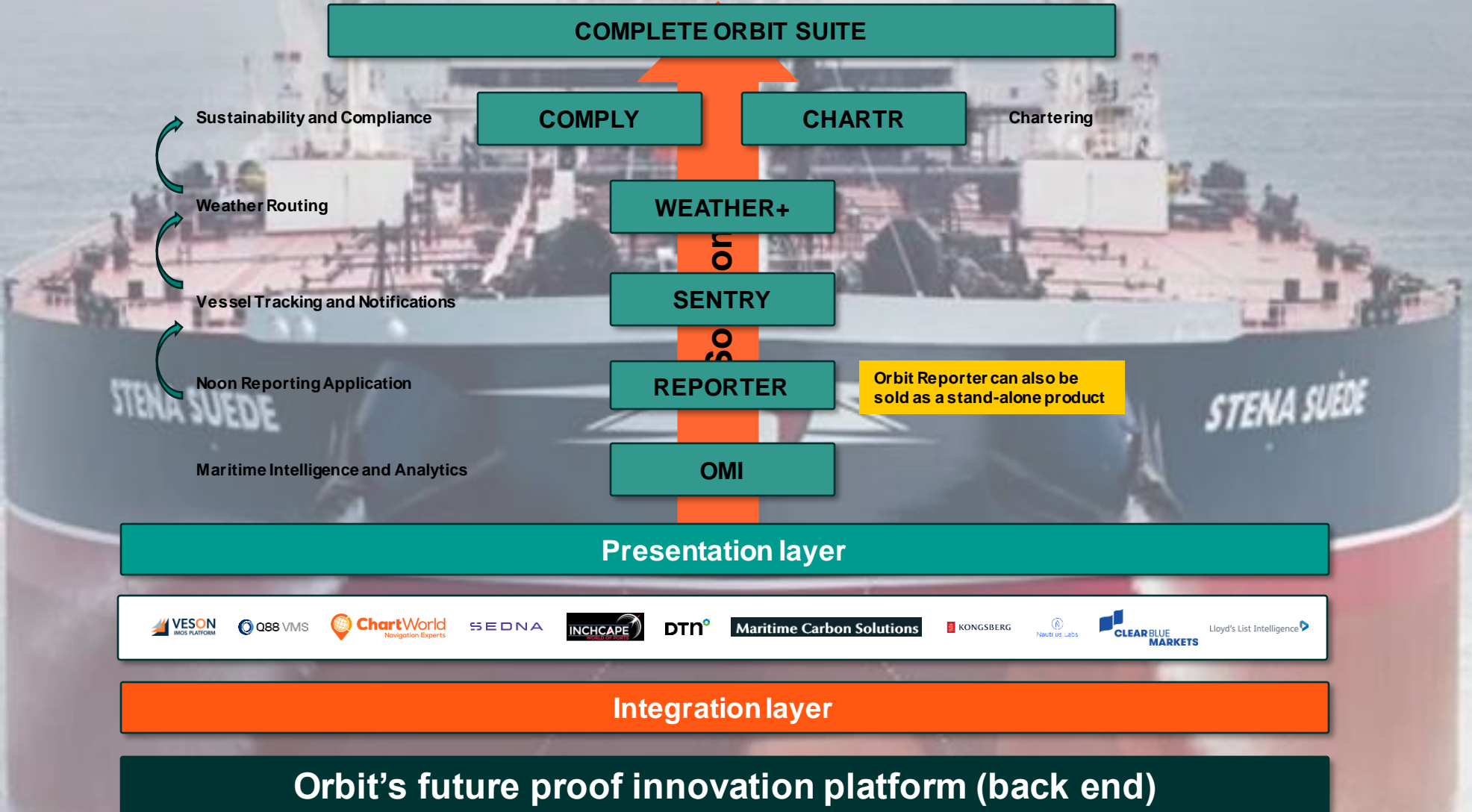
● WHAT IS ORBIT?

Orbit is the company's technology platform, which is comprised of a suite of vessel performance products and solutions.

These products and solutions are offered as Software-as-a-Service (SaaS), meaning there are ***no hardware costs***, and ***no software installations*** either on ship or on shore.

In fact, customers incur ***no upfront costs*** to try Orbit: Clients pay **only AFTER** they confirm successful delivery.

Solutions that cover pre-fixture, fixture and post-fixture use cases.



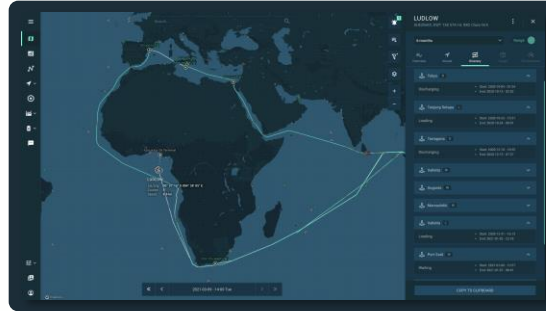


OMI: Maritime Intelligence & Analytics

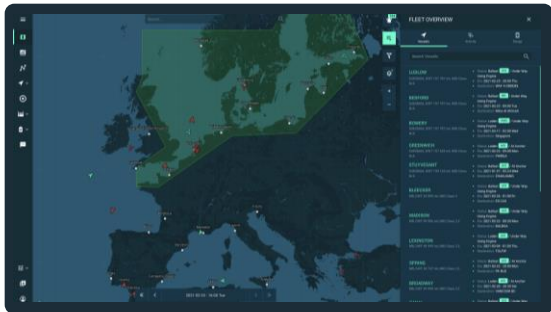
Trading patterns



Port Activities



Fleet Overview



Fleet Performance



Key features and benefits

Visualize the market in a single, elegant view

- Identify trading patterns in the global fleet
- Build custom fleets or track competitors
 - *Continuously monitor your market in a customized view*

Optimize performance in port

- Infused with Machine Learning and AI for enhanced Port Analytics
- Benchmark performance against your competitors
 - *Compare and increase your efficiency in port*

Gain insight into specific revenue opportunities

- Analyze vessels that compete for cargo in the areas that matter to you
- Quickly filter and segment your competition
 - *Improve your knowledge and negotiating position*

Analyze fleet efficiency

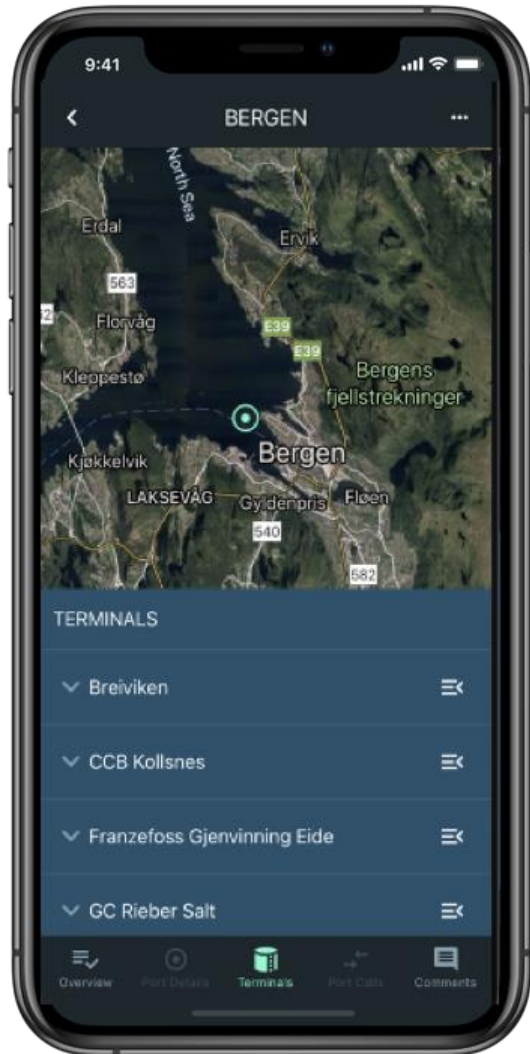
- View ballast/laden ratio and speed of vessels or fleets
- Spot patterns and evaluate vessel positioning versus the competitors
 - *Make informed and improved economic decisions*

The Orbit difference:

Built on modern and open architecture, Orbit aggregates, enriches and visualizes data so you can make responsive, efficient decisions.



OMI: Maritime Intelligence & Analytics



The Orbit difference: Tracking market conditions and competitors used to take hours, requiring massive spreadsheets and multiple systems. With Orbit, you get the insights you need in real time, all in one view.

OMI lets you see powerful competitive insights

Orbit's database includes:

- Current and historical AIS vessel positions
- Machine Learning and AI driven
- Vessel particulars
- Vessel ownership structure
- Data on more than 4000 ports
- Global bunker pricing
- Weather
- ECA and HRA overlays
- Weather layers

Collaboration features

- Create and share custom fleet lists
- Share reports and dashboards
- Easy-to-generate file exports
- Share comments and ideas with colleagues

Optional features (with VMS integration)

- Position list
- Orbit AI Routing
- Detailed Port Call Analytics
- Additional data sets

OMI use-cases include:

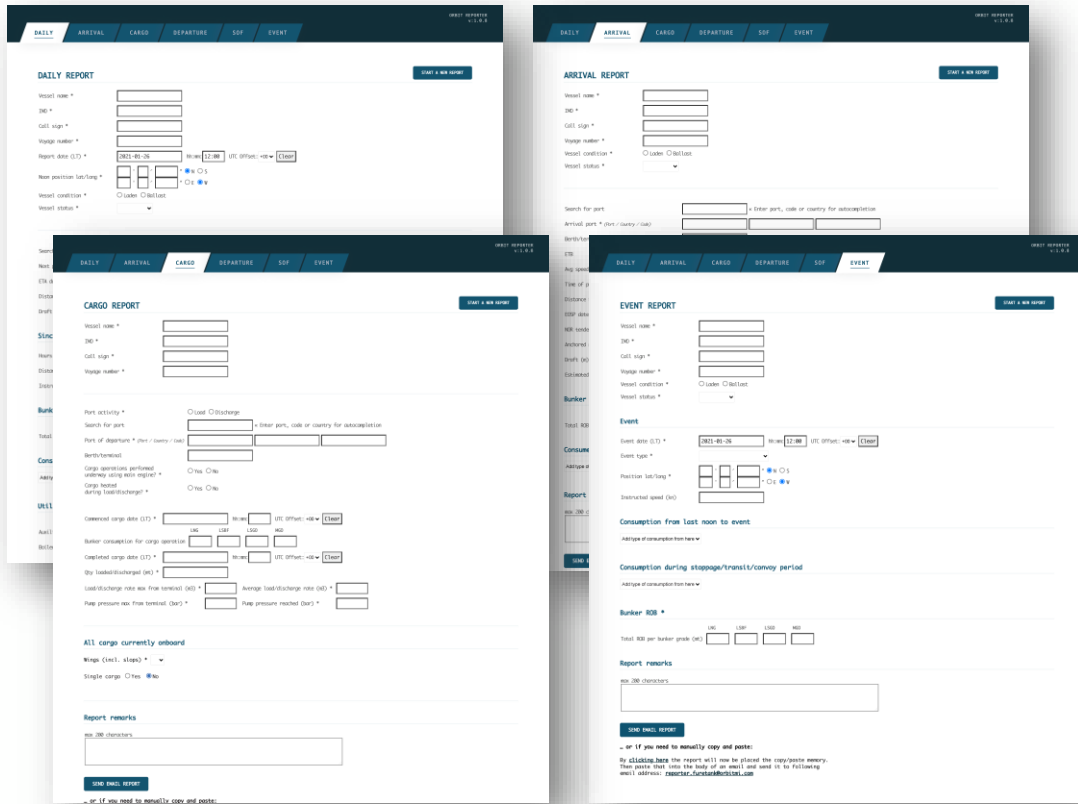
- Identify trading patterns
- See competitors' activities
- Port call analytics
- Improve negotiating positions
- Evaluate fleet efficiency and performance
- Vessel distribution (by segment, region, ballast/laden)
- Spot patterns to optimize vessel positioning

Standard features include:

- Unlimited Users
- Reports & Dashboards
- Distance calculator



REPORTER: Noon & Event Reporting Application



Key features and benefits

Easy-to-use interface for all daily reports

- Browser-based tool usable on any Internet connected device
- Minimizes double entry and time spent entering data
→ *Simplifies daily reporting for the crew*

Decrease errors, increase compliance

- Built-in validation flags errors before they are sent
- Ease-of-use increases likelihood reports will be complete
→ *Improved data quality drives better analytics and decisions*

Customize reports for your company

- Create a look and feel that your crew will find familiar
- Add/subtract data entry fields or add new reports
→ *Data seamlessly fits into your workflow*

Reports auto-sent when link is live

- Works offline during times of weak connectivity
- Automatically transmits when connectivity improves
→ *Reduce the number of missed reports*

The Orbit difference:

Orbit Reporter turns the traditional noon report and other offshore communications into an accurate hi-tech data feed



REPORTER: Noon & Event Reporting Application



The Orbit difference:
Orbit Reporter is a flexible, browser-based tool that installs on any shipboard internet connected device in seconds. Data entries are parsed, amplified and visualized throughout Orbit's solutions.

Reporter includes:

- One interface for multiple reports
- Custom report templates
- Customizable interface
- Built-in data validation

Collaboration features

- On-shore operators can request missing reports and discuss deviations directly
- Automatic email performance summary reports to vessel

Reporter use-cases include:

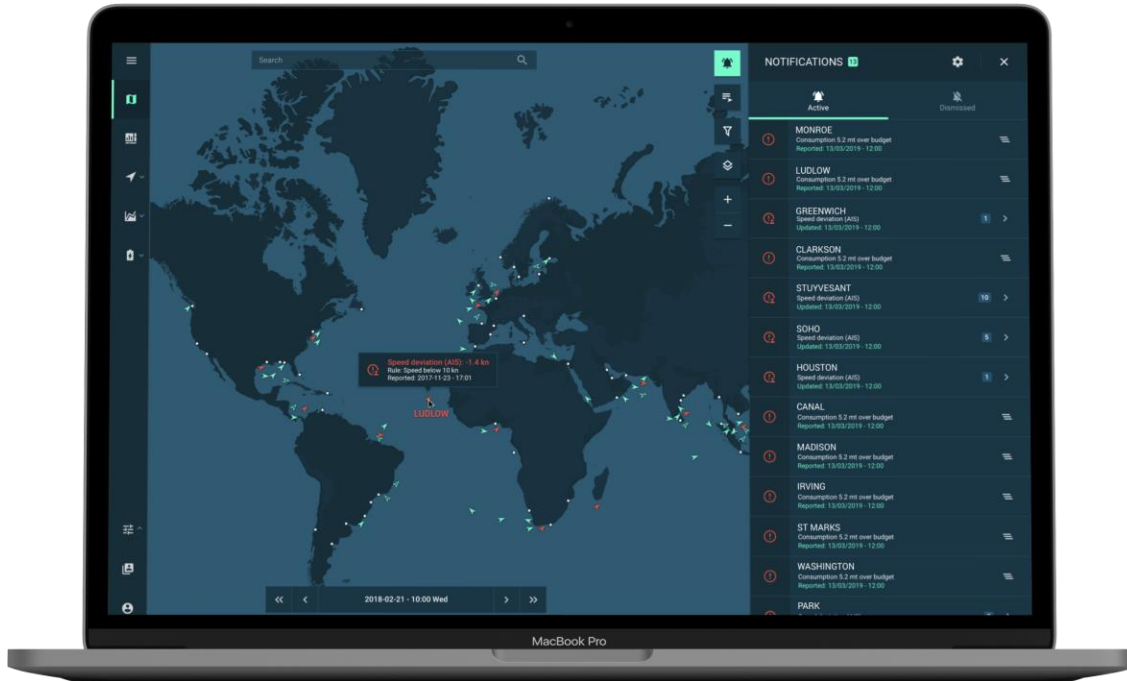
- HTML-based tool installs on any vessel type
- Customize the interface for your company's workflow
- Common data entries, such as vessel name and IMO number, propagated across all reports

Report templates

- Noon/Daily
- Arrival
- Cargo
- Departure
- Statement of Fact (SOF)
- Next Voyage
- Event
- Custom



SENTRY: Vessel Tracking & Notifications



Key features and benefits

Monitor your vessels from anywhere

- Real time alerts on deviations in speed, ETA and consumption give you visibility into every voyage
- When necessary, intervene early to help reduce bunker consumption
→ *Reduce CO2 emissions while maximizing profits*

Easy-to-use noon reporting application

- Includes Orbit Reporter, a browser-based tool usable on any Internet connected device
- Minimizes double entry and time spent entering data
→ *Simplifies daily reporting for the crew*

Find the smartest route, not just the shortest

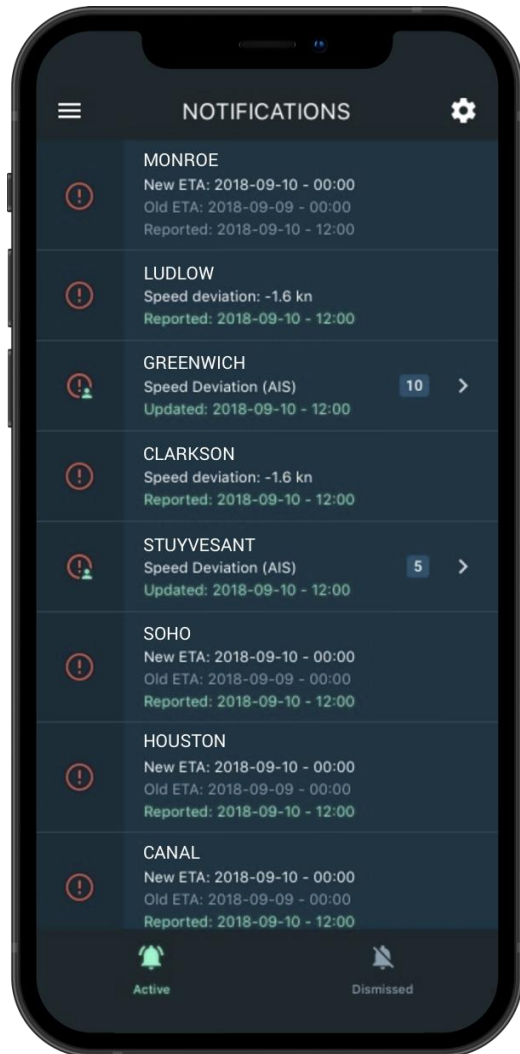
- Build point-to-point routes, incorporating parameters such as distance, weather, canal and narrow passage constraints with a single click
- Innovative graph processing algorithms deliver more detailed routes
→ *More precise routing drives better decisions*

The Orbit difference:

Backed by powerful AI and machine learning, Sentry provides visibility into your fleet and empowers your team to act when it matters most.



SENTRY: Vessel Tracking & Notifications



The Orbit difference:
Always be in the know. Configure and deliver the alerts you need right to your mobile device so you can plan your day even before you get to the office.

Sentry puts you in control of your vessels

Sentry includes:

- Configurable alerts and notifications
- Market overview
- Fleet and vessel management
- Create and share custom fleets
- Nautical distance calculator
- Latest SIRE & CDI inspection reports
- Mobile app
- Orbit Reporter
- Orbit AI Routing
- Weather layers

Collaboration features

- Create and share custom fleet lists
- Share reports and dashboards
- Easy-to-generate file exports
- Share comments and ideas with colleagues

Sentry use-cases include:

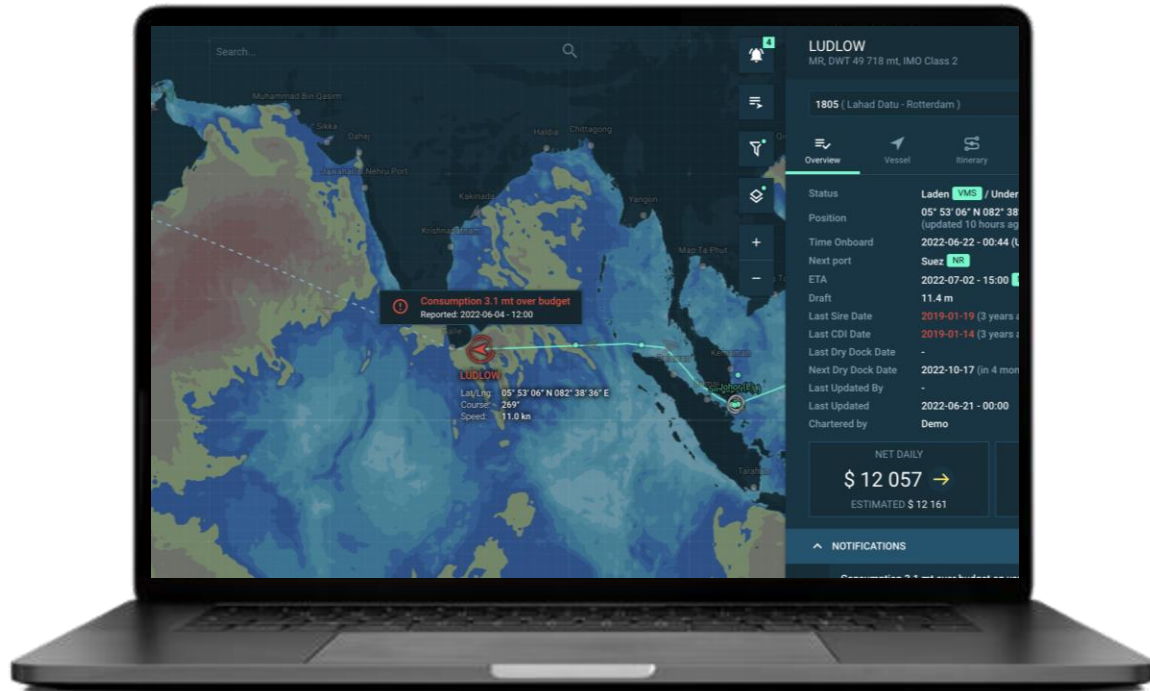
- Configure alerts for deviations in speed, ETA and consumption
- Assess sustainability impact and bunker consumption for each route
- Increase vessel efficiency and sustainability
- Flag missing noon reports
- Determine inspection status for individual vessels

Standard features include:

- Unlimited Users
- Reports & Dashboards
- Single sign-on



WEATHER +: Weather Routing



The Orbit difference:

OrbitMI partners with trusted providers of weather intelligence to combine proprietary data, advanced technology and marine-specific expertise with a global reach.

Key features and benefits

Optimize all voyages, no matter their duration

- Minimize bunker consumption and reduce CO2 emissions, even on voyages of only a few days or weeks,
→ *Unlock significant savings and improve CII ratings*

Unlimited routing reduces effective cost per route

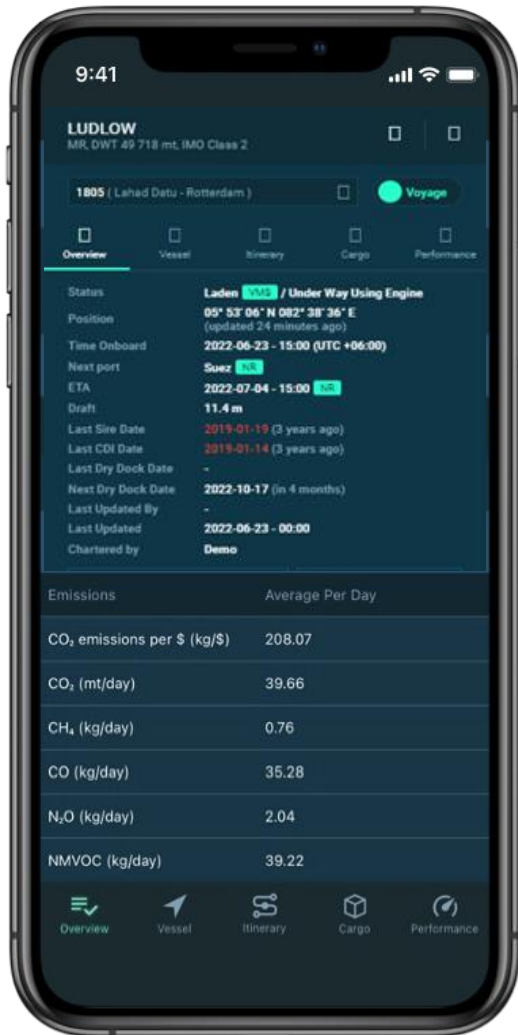
- Pricing per active vessel allows you to create unlimited routes and amortize the cost across your fleet
→ *Remove economic constraints on weather-routing*

Turn weather routing into a competitive advantage

- Perform “what-if” analysis to optimize based on speed, GHG, laycan, and other parameters
→ *Gain visibility and control over returns for all voyages*



WEATHER +: Weather Routing



The Orbit difference: Digital transformation, with insurance. Keep your traditional keep shore-based routing service while you transition to a digitally transformed solution

New capabilities for your ESG portfolio

Weather+ includes:

- Generate unlimited weather-optimized routes
- Unlimited and automatically generated Post-Voyage Analysis Reports (PVARs)
- APIs including Marine Weather, Vessel Routing and Vessel Insights
- Comprehensive visualizations
- Orbit AI Routing

Weather+ use-cases include:

- Manage sustainability impact and bunker consumption for each route
- Improve vessel safety and efficiency
- Improve CII ratings
- Reduce total cost of weather-routing
- Transition to digital transformation

Collaboration features

- Shared visibility into routes, reports and dashboards
- Easy-to-generate file exports
- Share comments and ideas with colleagues

Standard features include:

- Unlimited Users
- Reports & Dashboards
- Distance calculator and AI routing engine
- Single sign-on



COMPLY: Sustainability & IMO Compliance

Vessel Name	Departure		Arrival		Condition	Departure Data		
	Port	Date	Port	Date		Ballast / Laden	Cargo (mt)	Mean Draft (m)
Ast Sunshine DEMO	SERVICE AREA OFF MONTIYRECO	2021-03-12 - 21:36	SAN LORENZO	2021-03-14 - 06:30	Ballast	0.0	6.7	0.0
Bedford	SAN LORENZO	2021-03-18 - 01:12	ZONA COMLIN	2021-03-18 - 23:00	Laden	43 500.0	10.2	0.0
	RECALADA PILOTS / ZONA COMLIN	2021-03-20 - 08:30	DURBAN	2021-04-05 - 08:00	Laden	43 500.0	10.3	0.0
Bowery	LAKE CHARLES	2021-03-05 - 19:00	BULLEN BAY	2021-03-11 - 23:00	Ballast	0.0	7.4	2.8
Canal								
Ludlow	CUK ANCHORAGE	2021-03-26 - 00:01	LAHAD DATU	2021-03-31 - 18:30	Ballast	0.0	6.4	1.2
	LAHAD DATU	2021-04-02 - 10:00	SINGAPORE	2021-04-06 - 10:00	Laden	6 990.0	7.4	0.0
	SINGAPORE	2021-04-08 - 09:48	PASIR GUDANG	2021-04-08 - 11:30	Laden	27 157.0	9.5	0.0
Sonangol Cazenga DEMO								
Sonangol Hulla DEMO								
Sonangol Kizamba DEMO								
Sonangol Porto Amboim DEMO								
Sonangol Rangol DEMO								
Spring	SINGAPORE	2021-03-22 - 12:00	BASRA	2021-04-05 - 15:30	Ballast	0.0	7.7	2.7
Stena Concert DEMO								

The Orbit difference:

Comprehensive emissions data collection lets users track, calculate and report on all greenhouse gases, local pollutants and volatile organic compounds (VOC).

Key features and benefits

Simplify your regulatory burden

- Built in collaboration with experts to ensure compliance
- Generates reports in a variety of preapproved formats including CII, EU ETS & MRV, IMO DCS and class societies
→ *Slash the time eaten up by compliance reporting*

Drive transparency with colleagues and customers

- Monitor emissions during voyages and for historical periods
- Share performance reports and voyage emissions scorecards
→ *Keep stakeholders informed continuously*

Align sustainability and profitability

- Real time alerts on deviations in speed, ETA, and consumption give you visibility into every voyage
- When necessary, intervene early to help reduce bunker consumption
→ *Reduce CO2 emissions while maximizing profits*



COMPLY: Forecasting for CII, EEXI & EU ETS

PERFORMANCE SUMMARY

Vessel Name	Departure		Arrival		Condition	Departure Data		
	Port	Date	Port	Date		Ballast / Laden	Cargo (mt)	Mean Draft (m)
Ast Sunshine DEMO	SERVICE AREA OFF MONTEVIDEO	2021-03-12 - 21:36	SAN LORENZO	2021-03-14 - 06:30	Ballast	0.0	6.7	0.0
Bedford	SAN LORENZO	2021-03-18 - 01:12	ZONA COMLIN	2021-03-18 - 23:00	Laden	43 500.0	10.2	0.0
	RECALADA PILOTS / ZONA COMLIN	2021-03-20 - 08:30	DURBAN	2021-04-05 - 08:00	Laden	43 500.0	10.3	0.0
Bowery	LAKE CHARLES	2021-03-05 - 19:00	BULLEN BAY	2021-03-11 - 23:00	Ballast	0.0	7.4	2.8
Canal								
Ludlow	CUK ANCHORAGE	2021-03-26 - 00:01	LAHAD DATU	2021-03-31 - 18:30	Ballast	0.0	6.4	1.2
	LAHAD DATU	2021-04-02 - 10:00	SINGAPORE	2021-04-06 - 10:00	Laden	6 990.0	7.4	0.0
	SINGAPORE	2021-04-08 - 09:48	PASIR GUDANG	2021-04-08 - 11:30	Laden	27 157.0	9.5	0.0
Sonangol Cazenga DEMO								
Sonangol Huila DEMO								
Sonangol Kizamba DEMO								
Sonangol Porto Amboim DEMO								
Sonangol Rangol DEMO								
Spring	SINGAPORE	2021-03-22 - 12:00	BASRA	2021-04-05 - 15:30	Ballast	0.0	7.7	2.7
Stena Concert DEMO								

7 excluded Based on set inclusions. To modify them, click on filter icon at the top right corner.

The Orbit difference:

A micro-service calculates emissions based on multiple regulations and is easily updated, making Orbit future-proof to regulatory changes.

Key features and benefits

Real time monitoring and forecasting of CII, EEXI & EU ETS:

- Adapts easily to the latest guidelines
- Adjustable time periods, vessels and fleets
- Offer numerous ways of analysing and reporting
→ *Easy compliance reporting*

Integrated with AI Routing and Orbit Weather+

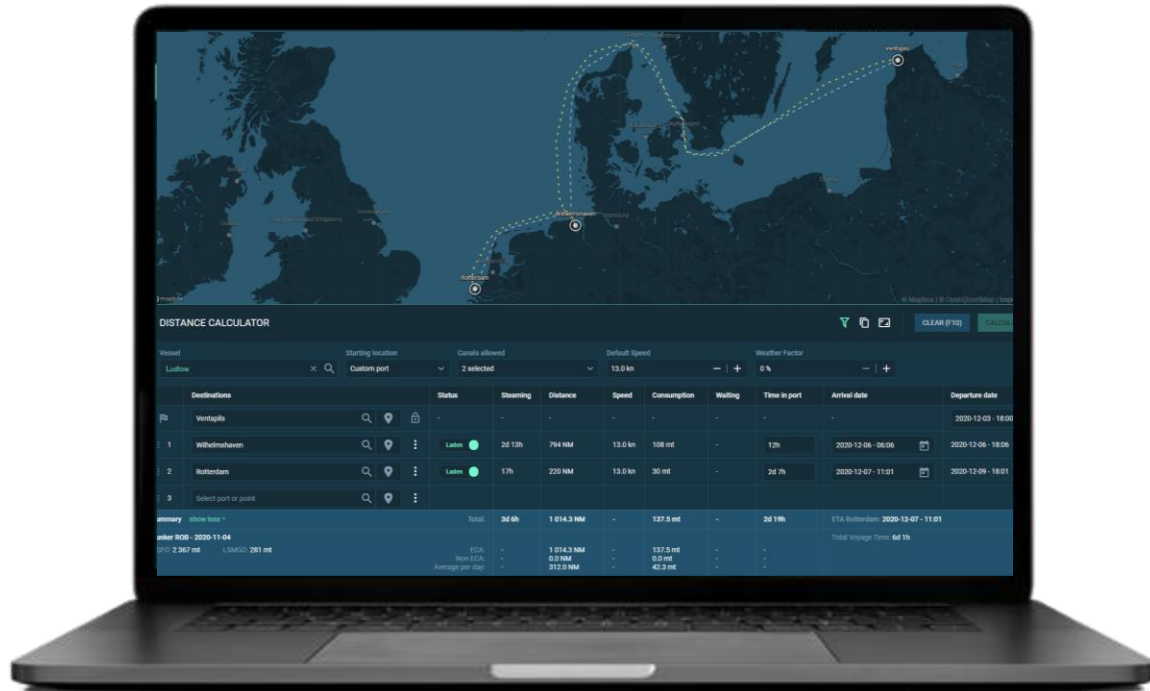
- Weather optimized routes with forecasted CII
- Enabling multiple scenarios and optimizations
→ *Helping you making the greenest choices*

Focus on both sustainability and profitability

- Current and predictive CII for your fleet
→ *Early corrective actions*
- Improve and optimize vessel and fleet performance
→ *Reduce emissions while maximizing profits*



CHART*R*: Chartering



Key features and benefits

Gain insight into specific revenue opportunities

- Analyze vessels that compete for cargo in the areas that matter to you
- Quickly filter and segment your competition
→ *Improve your knowledge and negotiating position*

Vessel selection tool

- Evaluate alternative vessels for TC in
- Analyze positions, technical data, speed & consumption and routes
→ *Select the best fit for purpose such as profitability and sustainability*

Collaborate efficiently with your customers

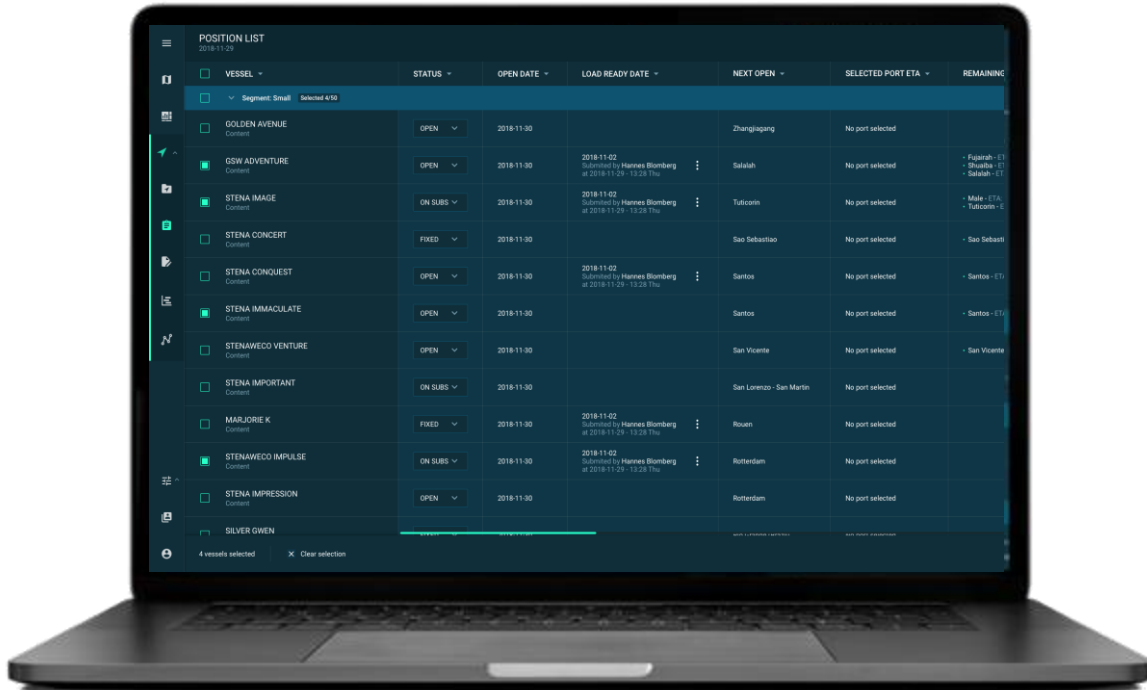
- Reduce response times to brokers
- Save time with all your information in one unified interface
→ *Capture more fixtures with responsive chartering tools*

The Orbit difference:

Visibility into market conditions gives you a unified view of the market so you can act fast to seize opportunities



CHART R: Chartering



Key features and benefits

Eliminate surprises in your schedule

- Receive real-time alerts of deviations in ETA
- Create and distribute customizable and collaborative position lists
→ *Know in advance of risks to making laycan date*

Find the smartest route, not just the shortest

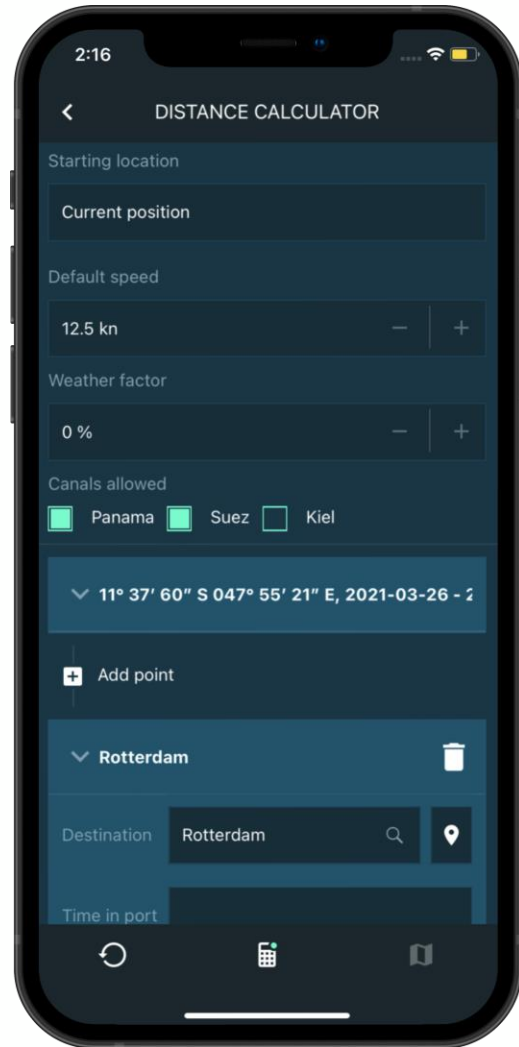
- Build point-to-point routes, incorporating parameters such as distance, weather, canal and narrow passage constraints with a single click
- Innovative graph processing algorithms deliver more detailed routes
→ *More precise routing drives better decisions*

The Orbit difference:

Visibility into market conditions gives you a unified view of the market so you can act fast to seize opportunities



CHART*R*: Chartering



The Orbit difference:
ChartR amplifies your existing chartering solution with artificial intelligence that delivers accurate and relevant insights to your desktop or smart phone

Chart*R* strengthens and connects your team

Chart*R* includes:

- Fleet and vessel management
- Create and share custom fleets
- Customizable alerts and notifications
- Fleet dashboard
- Extensive visualizations
- Bunker prices
- Inspections
- Position list
- Nautical distance calculator
- Mobile app
- Orbit Reporter
- Orbit AI Routing
- Weather layers
- Automated scheduling

Collaboration features

- Create and share custom fleet lists
- Share reports and dashboards
- Easy-to-generate file exports
- Share comments and ideas with colleagues

Chart*R* use-cases include:

- Vessel selection tool
- Identify trading patterns
- See competitors' activities
- Port call analytics
- Improve negotiating positions
- Evaluate your voyage options before committing
- Eliminate surprises around ETAs
- Increase vessel efficiency and sustainability

Standard features include:

- Unlimited Users
- Reports & Dashboards
- Single sign-on



WE ARE DIFFERENT

Yes, everyone says that, but OrbitMI really is. It starts with our commitment to your success, which is why we require no upfront investment to trial our solutions. You can try before you buy.

OrbitMI is unique in that we are both a solutions provider and an aggregator. We offer software that addresses the complete voyage lifecycle (pre-fixture, fixture, post-fixture).

But Orbit also aggregates and integrates with your current (and future) systems, such as your weather provider or VMS so you can continue to generate value from your investments.

Plus, Orbit can connect with the ever-changing field of data sources, performance models and APIs so you'll never miss out on the latest innovation.

Through Maritime Carbon Solutions (MCS), we can provide environmental and reporting solutions to charterers as well.

We think that makes us different, but the only thing that matters is how we can help...



LET'S TALK

We would love to find out how we can help you with your environmental and reporting needs.

Please reach out to Ali Riaz, CEO at ali.riaz@orbitmi.com to set up a short conversation.

Thank you very much.

Visit orbitmi.com and follow up with us on our:

[Blog](#) | [LinkedIn](#) | [Resources](#)