

Solutions for multiple cables and pipes

Use the table to find a solution matching your needs. You are always welcome to contact your Roxtec representative for assistance.

	S	SRC	SF	SK	SBTB	R with SL R	R with SLA	RX	GK FS SK
A-class fire	⊙	⊙	⊙	⊙	⊙	⊙	⊙	⊙	⊙
H-class fire	⊙	⊙	⊙	⊙	⊙	⊙			
Jet fire	⊙	⊙	⊙	⊙	⊙				
Watertightness 4 bar	⊙	⊙	⊙	⊙	⊙			⊙	
Watertightness 2.5 bar							⊙		
Gas-tightness 2.67 bar	⊙	⊙	⊙	⊙	⊙			⊙	
Welded installation	⊙	⊙	⊙	⊙	⊙	⊙			
Rectangular frame solution	⊙	⊙	⊙	⊙	⊙				
General applications	⊙								
Stress constraints		⊙							
Uneven hole cut			⊙						
Raised/Tilted installation				⊙					
Tightness test after installation/ additional protection					⊙				
Packing space configurable per cable density	⊙	⊙	⊙	⊙	⊙				
Round sleeve solution						⊙	⊙	⊙	⊙
Non-weld sleeve							⊙	⊙	
Packing space fixed square 30–120 mm						⊙	⊙	⊙	
Cable bundles									⊙
Electrical busbar									⊙
ES version available*	⊙	⊙	⊙	⊙	⊙	⊙			
BG version available**	⊙		⊙	⊙	⊙				
Ex version available***	⊙	⊙	⊙	⊙	⊙	⊙			

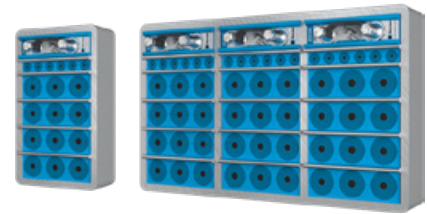
*Electromagnetic shielding **Bonding and grounding ***IECEX/ATEX rated

Complete product data online

Please visit roxtec.com/products for the latest and complete information on our sealing solutions. All technical data, such as product dimensions, ratings and certificates, drawings and installation instructions, are available online.

Roxtec S transit

Transit for welding to the structure.



The Roxtec S is a multi-cable and pipe transit available in different materials and with a single or various combinations of openings. The transit frame is produced in 10mm thick metal and is attached to the structure by welding. The sealing modules are adaptable to cables and pipes of different sizes, and can be used to build in spare capacity in the transit.

Benefits

- Fire rated
- Gas-tight
- Watertight
- Dust-tight
- Easy to maintain and inspect
- Provides built-in spare capacity
- Vibration tested

Installation

Structure of installation:

- Metal

Mounting type:

- Welding

Ratings & certificates

Fire:

- A-CLASS according to IMO 2010 FTP Code
- H-CLASS according to IMO 2010 FTP Code+ HC-fire load curve
- E/EI rating according to EN 45545

Gas-tightness:

- 2.67 bar (catastrophic)

Watertightness:

- 4 bar (catastrophic)

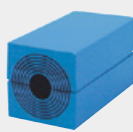
Sealing components



Roxtec S frame



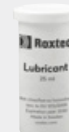
Roxtec Wedge & Wedgekit



Roxtec RM module with Multidiameter™



Roxtec Stayplate



Roxtec Lubricant



Roxtec Sealing kit

Roxtec SRC r20 transit

Transit with metal frame for load-bearing structures.



The Roxtec SRC r20 is a cable and pipe transit with rounded corners to reduce stress concentration and the risk of cracks around the frame. The metal transit frame is available in different materials and in a single or various combinations of openings. The seal is welded to the structure. The standard sealing modules are adaptable to cables and pipes of different sizes, and can be used to build in spare capacity in the transit.

Benefits

- Fire rated
- Gas-tight
- Watertight
- Dust-tight
- Easy to maintain and inspect

Installation

Structure of installation:

- Metal

Mounting type:

- Welding

Ratings & certificates

Fire:

- A-CLASS according to IMO 2010 FTP Code
- H-CLASS according to IMO 2010 FTP Code+ HC-fire load curve

Gas-tightness:

- 2.5 bar (catastrophic)

Watertightness:

- 4 bar (catastrophic)

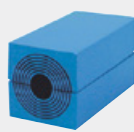
Sealing components



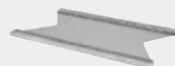
Roxtec SRC frame



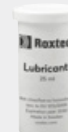
Roxtec Wedge & Wedgekit



Roxtec RM module with Multidiameter™



Roxtec Stayplate



Roxtec Lubricant

Roxtec SRC r40 transit

Transit with metal frame for load-bearing structures.



The Roxtec SRC r40 is a cable and pipe transit with rounded corners to reduce stress concentration and the risk of cracks around the frame. The metal transit frame is available in different materials and in a single or various combinations of openings. The seal is welded to the structure. The standard sealing modules are adaptable to cables and pipes of different sizes, and can be used to build in spare capacity in the transit.

Benefits

- Fire rated
- Gas-tight
- Watertight
- Dust-tight
- Easy to maintain and inspect

Installation

Structure of installation:

- Metal

Mounting type:

- Welding

Ratings & certificates

Fire:

- A-CLASS according to IMO 2010 FTP Code
- H-CLASS according to IMO 2010 FTP Code+ HC-fire load curve

Gas-tightness:

- 2.5 bar (catastrophic)

Watertightness:

- 4 bar (catastrophic)

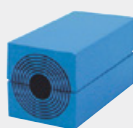
Sealing components



Roxtec SRC frame



Roxtec Wedge & Wedgekit



Roxtec RM module with Multidiameter™



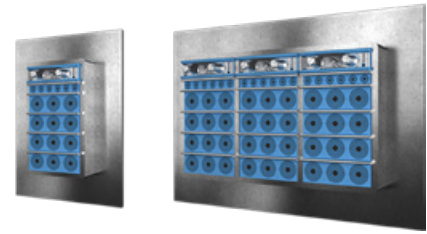
Roxtec Stayplate



Roxtec Lubricant

Roxtec SF transit

Cable and pipe transit with metal frame and flange for welding to the structure.



The Roxtec SF is a cable and pipe transit available in different materials and with a single or various combinations of openings. The transit frame is produced in 10mm thick metal and has a flange to simplify welding to unprecise holes. The standard sealing modules are adaptable to cables and pipes of different sizes, and can be used to build in spare capacity in the transit.

Benefits

- Fire rated
- Gas-tight
- Watertight
- Dust-tight
- Easy to maintain and inspect
- Provides built-in spare capacity
- Vibration tested

Installation

Structure of installation:

- Metal

Mounting type:

- Welding

Ratings & certificates

Fire:

- A-CLASS according to IMO 2010 FTP Code
- H-CLASS according to IMO 2010 FTP Code+ HC-fire load curve
- E/EI rating according to EN 45545
- F/T rating according to UL 1479

Gas-tightness:

- 2.5 bar (catastrophic)

Watertightness:

- 4 bar (catastrophic)

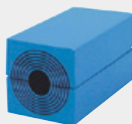
Sealing components



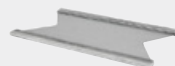
Roxtec SF frame



Roxtec Wedge & Wedgekit



Roxtec RM module with Multidiameter™



Roxtec Stayplate



Roxtec Lubricant



Roxtec Sealing kit

Roxtec SK transit

Transit with extra deep metal frame for welding to the structure.



The Roxtec SK is a cable and pipe transit with extended depth that is available in different materials and in a single or various combinations of openings. The metal transit frame is attached through welding and used for an angular attachment to accommodate stiff cables that do not pass in a straight angle through a deck or bulkhead. The seal also allows for an increased distance between the packing space and the structure. The standard sealing modules are adaptable to cables and pipes of different sizes, and can be used to build in spare capacity in the transit.

Benefits

- Fire rated
- Gas-tight
- Watertight
- Dust-tight
- Easy to maintain and inspect
- Vibration tested

Installation

Structure of installation:

- Metal

Mounting type:

- Welding

Ratings & certificates

Fire:

- A-CLASS according to IMO 2010 FTP Code
- H-CLASS according to IMO 2010 FTP Code+ HC-fire load curve
- Jet fire according to ISO 22899-1 and OTI 95634
- E/EI rating according to EN 45545

Gas-tightness:

- 2.5 bar (catastrophic)

Watertightness:

- 4 bar (catastrophic)

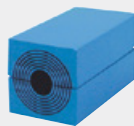
Sealing components



Roxtec SK frame



Roxtec Wedge & Wedgekit



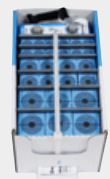
Roxtec RM module with Multidiameter™



Roxtec Stayplate

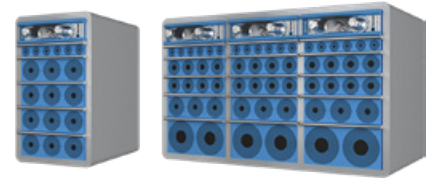


Roxtec Lubricant



Roxtec Sealing kit

Roxtec SBTB transit



Transit with metal frame for an extra level of fire protection.

The Roxtec SBTB is a cable and pipe transit for high levels of fire protection. The metal transit frame is to be welded to the structure. The seal provides easy verification of pressure-tightness after installation through its back-to-back arrangement with an extra set of packing material.

Benefits

- Fire rated
- Gas-tight
- Watertight
- Dust-tight
- Provides built-in spare capacity

Installation

Structure of installation:

- Metal

Mounting type:

- Welding

Ratings & certificates

Fire:

- A-CLASS according to IMO 2010 FTP Code
- H-CLASS according to IMO 2010 FTP Code+ HC-fire load curve
- Jet fire according to ISO 22899-1 and OTI 95634

Gas-tightness:

- 2.5 bar (catastrophic)

Watertightness:

- 4 bar (catastrophic)

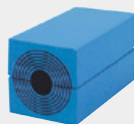
Sealing components



Roxtec SBTB frame



Roxtec Wedge & Wedgekit



Roxtec RM module with Multidiameter™



Roxtec Stayplate

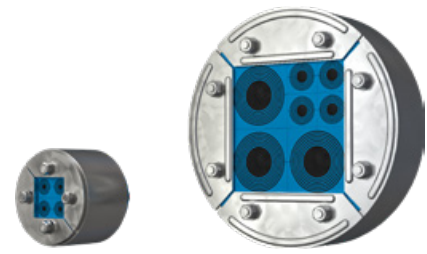


Roxtec Lubricant



Roxtec Sealing kit

Roxtec R transit with SL R



Round transit for sealing of multiple cables and pipes in a limited area.

The Roxtec R with SL R is a cable and pipe transit with sleeve for round holes. The compression is integrated in the transit frame so it seals by expansion. The standard sealing modules are adaptable to cable and pipe sizes, and can also be used to build in spare capacity in the transit. The net on the backside protects during horizontal installations (not included in R 70 and R 75). The sleeve is welded to the structure.

Benefits

- Fire rated
- Gas-tight
- Watertight
- Dust-tight
- Rodent resistant
- Easy to maintain and inspect
- Vibration tested

Installation

Structure of installation:

- Metal

Mounting type:

- Welding

Ratings & certificates

Fire:

- A-CLASS according to IMO 2010 FTP Code
- H-CLASS according to IMO 2010 FTP Code+ HC-fire load curve
- E/EI rating according to EN 45545

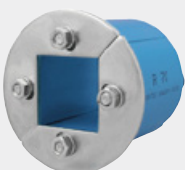
Gas-tightness:

- 2.5 bar (catastrophic)

Watertightness:

- 4 bar (catastrophic)

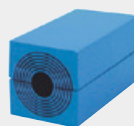
Sealing components



Roxtec R frame



Roxtec SL R sleeve



Roxtec RM module with Multidiameter™



Roxtec Lubricant

Roxtec R transit with SLA

Multi-cable transit with adaption sleeve for attachment in drilled holes.



The Roxtec R with SLA is a multi-cable transit with sleeve for round holes. The compression is integrated in the transit frame so it seals by expansion. The standard sealing modules are adaptable to cables of different sizes, and can be used to build in spare capacity in the transit. The sleeve is threaded and is attached to the structure with a counter nut.

Benefits

- Fire rated
- Watertight
- Area efficient
- Perfect for retrofit
- Quick and easy to install

Installation

Structure of installation:

- Metal

Mounting type:

- Bolting

Ratings & certificates

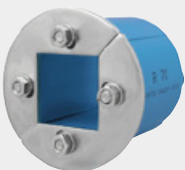
Fire:

- A-CLASS according to IMO 2010 FTP Code

Watertightness:

- 2.5 bar (catastrophic)

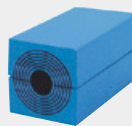
Sealing components



Roxtec R frame



Roxtec SLA adaption sleeve



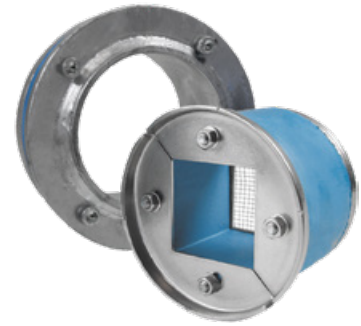
Roxtec RM module with Multidiameter™



Roxtec Lubricant

Roxtec R X transit

Transit for sealing around multiple cables and pipes in a limited area without welding or bolting.



The Roxtec RX is a round cable and pipe transit with a sleeve for attachment through expansion. The standard sealing modules are adaptable to cables and pipes of different sizes, and can be used to build in spare capacity in the transit. When the bolts are tightened, the rubber gasket on the outside of the sleeve expands in the hole to firm attachment.

Benefits

- Fire rated
- Gas-tight
- Watertight
- Perfect for retrofit
- Quick and easy to install
- Adapts to cables and pipes of different sizes

Installation

Structure of installation:

- Metal

Mounting type:

- Expansion

Ratings & certificates

Fire:

- A-CLASS according to IMO 2010 FTP Code

Gas-tightness:

- 2.67 bar (catastrophic)

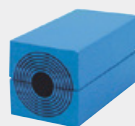
Watertightness:

- 4 bar (catastrophic)

Sealing components



Roxtec R X kit



Roxtec RM
module with
Multidiameter™



Roxtec Lubricant

GK Firestop sealing kit

Area efficient transit for cables, cable bundles or busbars.



The GK Firestop sealing kit is for use in sleeves in above waterline applications on ships and vessels. It combines cold smoke tightness with fire prevention as its integrated intumescent material expands to close the void in case of fire or a rise in temperature to over 150°C. The kit can be installed in a wide range of circular or oval sleeves, and it does not require any additional insulation for A-0 applications.

Benefits

- Fire rated
- Area efficient
- Quick and easy to install

Installation

Structure of installation:

- Metal

Mounting type:

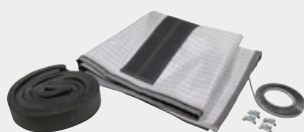
- Welding
- Bolting

Ratings & certificates

Fire:

- A-CLASS according to IMO 2010 FTP Code

Sealing components



GK FS SK