

Solutions for single cable or metal pipe

Use the table to find a solution matching your needs. You are always welcome to contact your Roxtec representative for assistance.

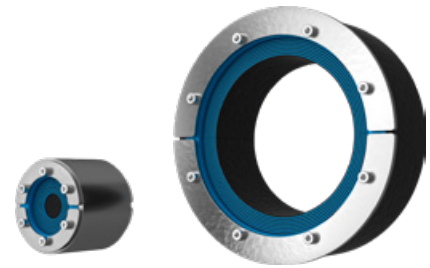
	RS with SL RS	RS with SLF RS	RS X	RS with SLA	SPM
A-class fire	●	●	●	●	●
H-class fire	●	●			
Jet fire	●				
Watertightness 4 bar	●	●	●		
Watertightness 2.5 bar				●	
Watertightness 1 bar					●
Gas-tightness 2.67 bar	●	●	●		
Gas-tightness 0.67 bar					●
Metal pipe only					●
Welded installation	●				
Non-weld installation		●	●	●	●
Bolted flanged installation		●			
Expansion attachment			●		●
Single nut installation				●	
ES version available*	●	●			
Ex version available**	●	●			

*Electromagnetic shielding **IECEx/ATEX rated

Complete product data online

Please visit roxtec.com/products for the latest and complete information on our sealing solutions. All technical data, such as product dimensions, ratings and certificates, drawings and installation instructions, are available online.

Roxtec RS seal with SL RS



Penetration seal for a single cable or pipe.

The Roxtec RS with SL RS is a seal with metal sleeve for single cables or pipes. The entry seal has two halves with removable layers making it adaptable to cables and pipes of different sizes. The sleeve is welded to the structure.

Benefits

- Fire rated
- Gas-tight
- Watertight
- Dust-tight
- Quick and easy to install
- Provides excellent cable retention
- Vibration tested

Installation

Structure of installation:

- Metal

Mounting type:

- Welding

Ratings & certificates

Fire:

- A-CLASS according to IMO 2010 FTP Code
- H-CLASS according to IMO 2010 FTP Code+ HC-fire load curve
- E/EI rating according to EN 45545

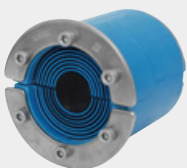
Gas-tightness:

- 2.67 bar (catastrophic)

Watertightness:

- 4 bar (catastrophic)

Sealing components



Roxtec RS seal

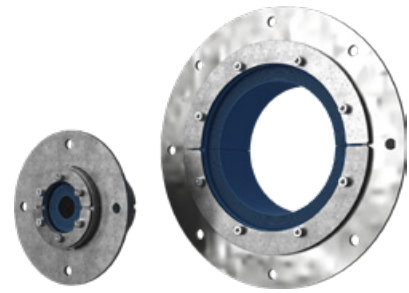


Roxtec SL RS sleeve



Roxtec Lubricant

Roxtec RS seal with SLF RS



Penetration seal for a single cable or pipe.

The Roxtec RS with SLF RS is a seal with metal sleeve for single cables or pipes. The entry seal has two halves with removable layers making it adaptable to cables and pipes of different sizes. The sleeve is bolted to the structure.

Benefits

- Fire rated
- Gas-tight
- Watertight
- Dust-tight
- Quick and easy to install
- Provides excellent cable retention
- Vibration tested

Installation

Structure of installation:

- Metal
- Concrete/Brick
- Sandwich
- Gypsum

Mounting type:

- Bolting

Ratings & certificates

Fire:

- A-CLASS according to IMO 2010 FTP Code
- H-CLASS according to IMO 2010 FTP Code+ HC-fire load curve
- E/EI rating according to EN 1366-3
- E/EI rating according to EN 45545
- F/T rating according to UL 1479

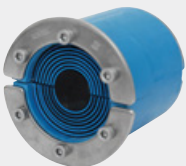
Gas-tightness:

- 2.67 bar (catastrophic)

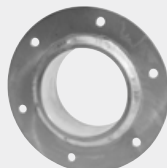
Watertightness:

- 4 bar (catastrophic)

Sealing components



Roxtec RS seal



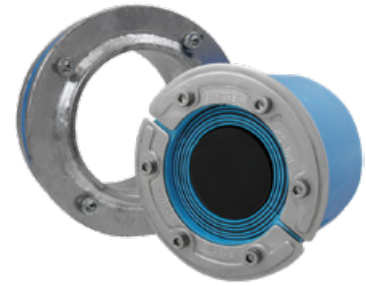
Roxtec SLF RS sleeve



Roxtec Lubricant

Roxtec RS X seal

Transit for use when welding is not allowed, recommended or desired.



The Roxtec RS X is a non-weld seal with sleeve for single cables or pipes. The transit is ideal for retrofit or when welding is not allowed, recommended or desired. The sleeve has a rubber gasket on the outside and expands in the hole to firm attachment as the bolts are tightened. The RS X seal is adaptable to cables and pipes of different sizes through removable layers.

Benefits

- Fire rated
- Watertight
- Dust-tight
- Perfect for retrofit

Installation

Structure of installation:

- Metal

Mounting type:

- Expansion

Ratings & certificates

Fire:

- A-CLASS according to IMO 2010 FTP Code

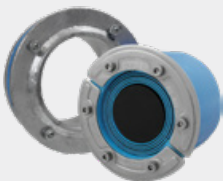
Gas-tightness:

- 2.67 bar (catastrophic)

Watertightness:

- 4 bar (catastrophic)

Sealing components



Roxtec RS X kit



Roxtec Lubricant

Roxtec RS seal with SLA

Cable seal with adaption sleeve for attachment in drilled holes.



The Roxtec RS with SLA is a seal with metal sleeve for single cables. The entry seal has two halves with removable layers making it adaptable to cables of different sizes. The sleeve is threaded and is attached to the structure with a counter nut.

Benefits

- Fire rated
- Watertight
- Area efficient
- Perfect for retrofit
- Quick and easy to install

Installation

Structure of installation:

- Metal

Mounting type:

- Bolting

Ratings & certificates

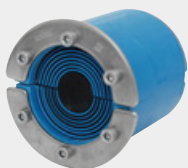
Fire:

- A-CLASS according to IMO 2010 FTP Code

Watertightness:

- 2.5 bar (catastrophic)

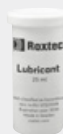
Sealing components



Roxtec RS seal



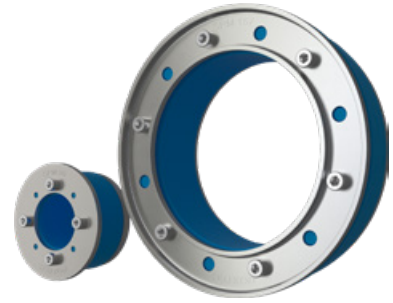
Roxtec SLA
adaption sleeve



Roxtec Lubricant

Roxtec SPM™ seal

Seal for metal pipes for use when welding is not allowed, recommended or desired.



The Roxtec SPM™ seal is a light-weight non-weld solution for single metal pipe entries. The transit is flexible towards pipe sizes as well as to uneven openings. The pipe seal is installed directly into structures without welding and has indicators showing when full compression is achieved.

Benefits

- Fire rated
- Watertight
- Light-weight
- Quick and easy to install
- Easy to maintain and inspect

Installation

Structure of installation:

- Metal

Mounting type:

- Expansion

Ratings & certificates

Fire:

- A-CLASS according to IMO 2010 FTP Code

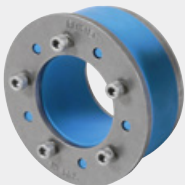
Gas-tightness:

- 0.67 bar (catastrophic)

Watertightness:

- 1 bar (catastrophic)

Sealing components



Roxtec SPM™ seal