

Solutions for cabinets

Use the table to find a solution matching your needs. You are always welcome to contact your Roxtec representative for assistance.

	GHM	KFO	EzEntry	ComSeal	HD
Cable range (mm)	3.5–99	3.5–99	3.5–34.5	3.5–34.5	3.5–54
IP 55				●	
IP 66/67	●	●	●		●
UL/NEMA 3, 12, 12K				●	
UL/NEMA 4, 4X, 12, 13	●		●		●
Composite		●	●		
Powder coated aluminum				●	
Stainless steel					●
Hot dip galvanized mild steel	●				
ES version available*	●			●	
BG version available**	●				●
Ex version available***	●				●

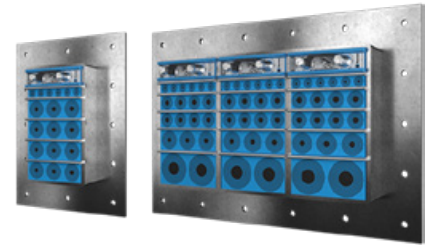
*Electromagnetic shielding **Bonding and grounding ***IECEx/ATEX rated

Complete product data online

Please visit roxtec.com/products for the latest and complete information on our sealing solutions. All technical data, such as product dimensions, ratings and certificates, drawings and installation instructions, are available online.

Roxtec GHM transit

Transit for high cable density and large cables.



The Roxtec GHM is a light-weight cable entry seal which is attached by bolting and includes a sealing strip to seal against the structure. The transit frame is available in different materials and in a single or various combinations of openings. The sealing modules are adaptable to cables and pipes of different sizes, and can be used to build in spare capacity in the transit.

Benefits

- Fire rated
- Gas-tight
- Watertight
- Dust-tight
- Rodent resistant
- Area efficient

Installation

Structure of installation:

- Metal
- Sandwich
- Cabinet

Mounting type:

- Bolting

Ratings & certificates

Fire:

- A-CLASS according to IMO 2010 FTP Code
- H-CLASS according to IMO 2010 FTP Code+ HC-fire load curve

Watertightness:

- 3 bar (catastrophic)

Rating:

- IP 66/67

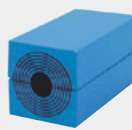
Sealing components



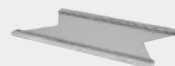
Roxtec GHM frame



Roxtec Wedge & Wedgekit



Roxtec RM module with Multidiameter™



Roxtec Stayplate



Roxtec Lubricant



Roxtec Sealing kit

Roxtec KFO transit

Area efficient light-weight transit.



The Roxtec KFO transit has a light-weight composite frame suitable for constructions where it is important to keep weight down to a minimum. The frame is openable and can be installed around already routed cables. The sealing modules are adaptable to cables and pipes of different sizes, and can be used to build in spare capacity in the transit.

Benefits

- Watertight
- Dust-tight
- Light-weight
- Area efficient
- Perfect for retrofit
- Quick and easy to install
- Allows pre-terminated cables

Installation

Structure of installation:

- Metal
- Sandwich
- Cabinet

Mounting type:

- Bolting

Ratings & certificates

Rating:

- IP 66/67

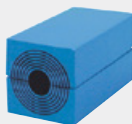
Sealing components



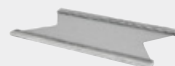
Roxtec KFO frame



Roxtec Wedge & Wedgekit



Roxtec RM module with Multidiameter™



Roxtec Stayplate



Roxtec Lubricant



Roxtec Sealing kit

Roxtec EzEntry™

Light-weight cable entry seals with composite frame.



The Roxtec EzEntry™ cable entry seals have light-weight composite frames and fit directly into standard openings. The seals are available in six sizes for cable capacity from 4 to 32 cables, and provide IP 66/67 protection.

Benefits

- Watertight
- Dust-tight
- Corrosion resistant
- Area efficient
- Allows pre-terminated cables

Installation

Structure of installation:

- Cabinet

Mounting type:

- Bolting

Ratings & certificates

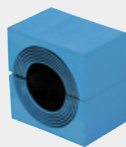
Rating:

- IP 66/67
- UL/NEMA 4,4X,12,13

Sealing components



Roxtec EzEntry™
frame



Roxtec CM
module with
Multidiameter™



Roxtec Lubricant

Roxtec ComSeal™

IP 55 rated entry seals with aluminum frame.



The Roxtec ComSeal™ is rated for IP 55 and available with powder coated aluminum and AISI 316, stainless steel frames. The transit is available in six different sizes to accommodate up to 32 cables.

Benefits

- Watertight
- Dust-tight
- Rodent resistant
- Corrosion resistant
- Light-weight
- Area efficient
- Vibration tested

Installation

Structure of installation:

- Cabinet

Mounting type:

- Bolting

Ratings & certificates

Fire:

- E/EI rating according to EN 45545

Rating:

- IP 55
- UL/NEMA 3,12,12K

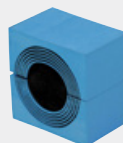
Sealing components



Roxtec ComSeal™
frame



Roxtec ComSeal™ AISI
316 frame



Roxtec CM
module with
Multidiameter™



Roxtec Assembly
Gel

Roxtec HD transits

High cable density transit devices with frame in 316L.



The Roxtec HD transits are cable entry devices for harsh and hazardous environments that allow up to 32 cables per opening. They are available in three different sizes. The cable transit has a 316L stainless steel frame and sealing modules which are adaptable to a variety of cable sizes.

Benefits

- Watertight
- Dust-tight
- Rodent resistant
- Corrosion resistant
- Light-weight
- Area efficient
- Allows pre-terminated cables

Installation

Structure of installation:

- Cabinet

Mounting type:

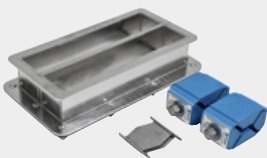
- Bolting

Ratings & certificates

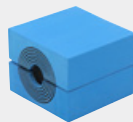
Rating:

- IP 66/67
- UL/NEMA 4,4X,12,13

Sealing components



Roxtec HD frame



Roxtec HD module with Multidiameter™



Roxtec Lubricant