

Solutions for single plastic pipe

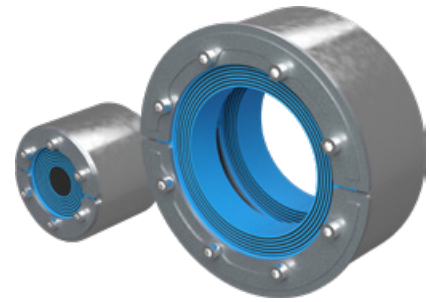
Use the table to find a solution matching your needs. You are always welcome to contact your Roxtec representative for assistance.

	RS PPS/S with SL	RS PPS/S F+WT with SL PPS	Sleev-it Fire penetration	Sleev-it Waterproof penetration
A-class fire	●	●	●	●
B-class fire		●	●	●
Watertightness 4 bar	●	●		
Gas-tightness 2.67 bar	●	●		
Watertightness 1 bar				●
Sustained watertightness after fire		●		
Welded installation	●	●	●	●

Complete product data online

Please visit roxtec.com/products for the latest and complete information on our sealing solutions. All technical data, such as product dimensions, ratings and certificates, drawings and installation instructions, are available online.

Roxtec RS PPS/S seal with SL RS



Light-weight plastic pipe seal for single-side installation.

The Roxtec RS PPS/S with SL RS is a seal for openings with plastic pipes in fire rated areas, such as steel decks and bulkheads. The seal ensures complete blocking of smoke, flames and water in case of fire and is approved for single-side installation. The transit is adaptable to pipes of different sizes through removable layers and includes a sleeve for welding to the structure. For plastic pipes up to 119mm.

Benefits

- Fire rated
- Gas-tight
- Watertight
- Dust-tight
- Quick and easy to install
- Vibration tested

Installation

Structure of installation:

- Metal

Mounting type:

- Welding

Ratings & certificates

Fire:

- A-CLASS according to IMO 2010 FTP Code
- E/EI rating according to EN 45545

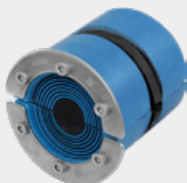
Gas-tightness:

- 2 bar (catastrophic)

Watertightness:

- 4 bar (catastrophic)

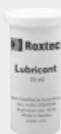
Sealing components



Roxtec RS PPS/S
seal



Roxtec SL RS sleeve



Roxtec Lubricant

Roxtec RS PPS/S F+WT seal with SL PPS



Plastic pipe seal for sustained watertightness after fire.

The Roxtec RS PPS/S F+WT+SL PPS seal is a back-to-back arrangement of two seals for plastic pipe penetrations below waterline where there is demand for sustained watertightness after fire in accordance with SOLAS Ch. II-1 Reg. 13.2.3 (2009 issue) and IMO MSC/circ. 736 Par. 2.1. Each seal consists of two halves with removable layers for adaptability to pipes of different sizes. The transit includes a sleeve for welding to the structure.

Benefits

- Fire rated
- Gas-tight
- Watertight
- Dust-tight
- Easy to maintain and inspect

Installation

Structure of installation:

- Metal

Mounting type:

- Welding

Ratings & certificates

Fire:

- A-CLASS according to IMO 2010 FTP Code

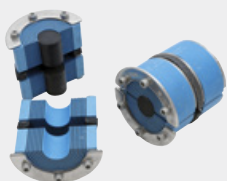
Gas-tightness:

- 2 bar (catastrophic)

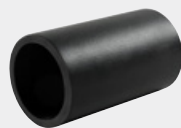
Watertightness:

- 4 bar (catastrophic)

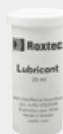
Sealing components



Roxtec RS PPS/S F+WT
seal

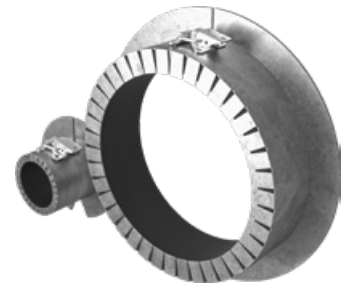


Roxtec SL PPS
sleeve



Roxtec Lubricant

Roxtec Sleev-it™ Fire penetration seal



Fire penetration seal for single plastic pipes.

The Roxtec Sleev-it™ Fire penetration seal is a light-weight and versatile solution. Its stainless steel casing contains intumescent material which closes off the penetration in case of fire. It is installed from one side and is openable so it can be used for both new-build and retrofit. It is available for both steel and aluminum structures.

Benefits

- Fire rated
- Light-weight
- Area efficient
- Quick and easy to install

Installation

Structure of installation:

- Metal

Mounting type:

- Welding

Ratings & certificates

Fire:

- A-CLASS according to IMO 2010 FTP Code
- B-CLASS according to IMO 2010 FTP Code

Sealing components

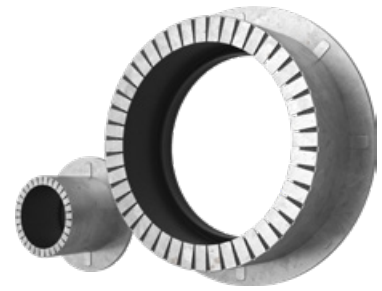


Roxtec Sleev-it™ Fire
penetration seal



Roxtec fire sealant

Roxtec Sleeve-it™ Waterproof penetration seal



Penetration seal for plastic pipes for basic protection against fire, gas and water.

The Roxtec Sleeve-it™ Waterproof penetration seal is a light-weight solution. Its stainless steel casing contains intumescent material to block the penetration in case of fire and its rubber grommet is engineered for a range of pipe sizes. It is installed from one side and is available for both steel and aluminum structures.

Benefits

- Fire rated
- Watertight
- Light-weight
- Area efficient
- Quick and easy to install

Installation

Structure of installation:

- Metal

Mounting type:

- Welding

Ratings & certificates

Fire:

- A-CLASS according to IMO 2010 FTP Code
- B-CLASS according to IMO 2010 FTP Code

Watertightness:

- 1 bar (catastrophic)

Sealing components



Roxtec Sleeve-it™
Waterproof
penetration seal