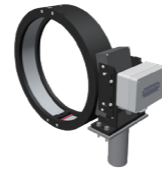


Indicator + Data logger



W310 x H235 x D110(mm)

Rotor, Stator



Measurable Shaft Diameter Range
: 200~1,000mm

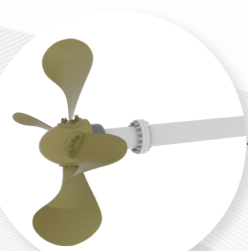
Indicator



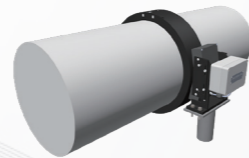
W210 x H150 x D140(mm)

SYSTEM PROCESS

Engine Room



Main Engine Shaft



Rotor & Stator



SYSTEM FEATURES



Fully met with EEXI regulation by IMO

No mechanical change

Simple installation

Tamperproof event and data logging (18 months storage capacity)

Enables integration and scalability with CII monitoring systems

Visible and audible alarms during override operation

ECR

Wheel House

- Torque, Power, RPM - Shaft power limitation
- Override Alarm - Data Storage for over 18 months
- (Shaft Data, Override condition, Override cause, Ship Position)



Indicator (optional)

RS485



SHaPoLi Indicator + Data Logger

RS485



GPS