

耐疲労鋼板「EX-Facter[®]」

Fatigue Resistant Steel Plate「EX-Facter[®]」

お問い合わせは

(株)神戸製鋼所 厚板営業部
TEL 03-5739-6172

KOBELCO 造船・海洋構造

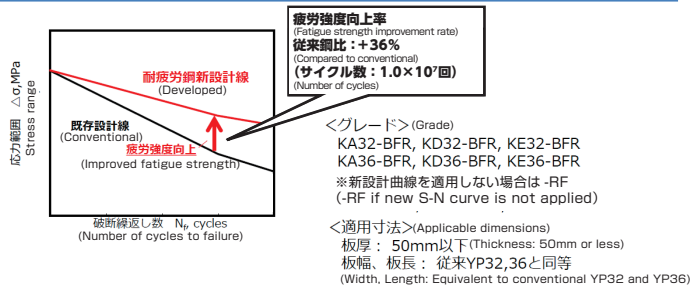


「EX-Facter[®]」は厚鋼板に疲労亀裂の発生を抑制する機能を付加し、疲労亀裂発生寿命を改善した耐疲労鋼板です。

“EX-Facter[®]” is a fatigue resistant steel plate that has a function to suppress fatigue crack initiation and it improve fatigue crack initiation life..

① EX-Facter[®]とは

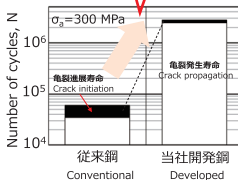
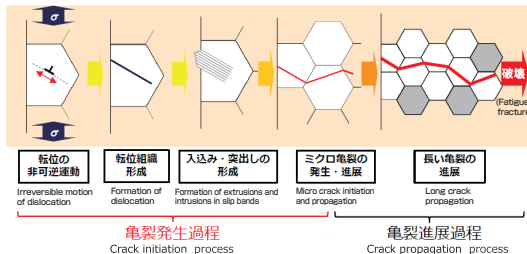
Summary of base material fatigue resistant steel plate (EX-Facter[®])



② 疲労破壊のメカニズムとEX-Facter[®]の開発コンセプト

Fatigue fracture mechanism and development concept

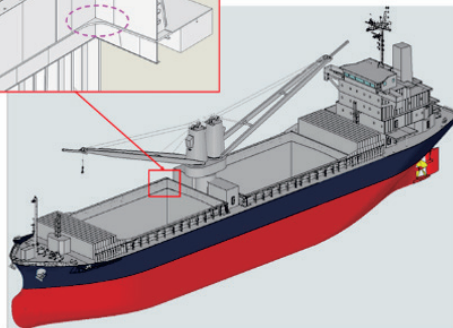
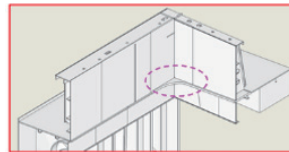
固溶強化元素 (Si, Cu) の活用とTMCP技術を駆使し亀裂発生を抑制
(Suppression of crack initiation by solid solution strengthening elements (Si, Cu) and TMCP technology)



(株) 新来島どっく様が初採用、
35隻に継続採用 (2024.3.25時点)

(First adopted by SHIN KURUSHIMA DOCKYARD CO., LTD. and continued adoption of 35 vessels (Mar. 25, 2024))

船倉上部開口コーナ一部



□ 亀裂発生寿命 Crack propagation
■ 亀裂進展寿命 Crack initiation